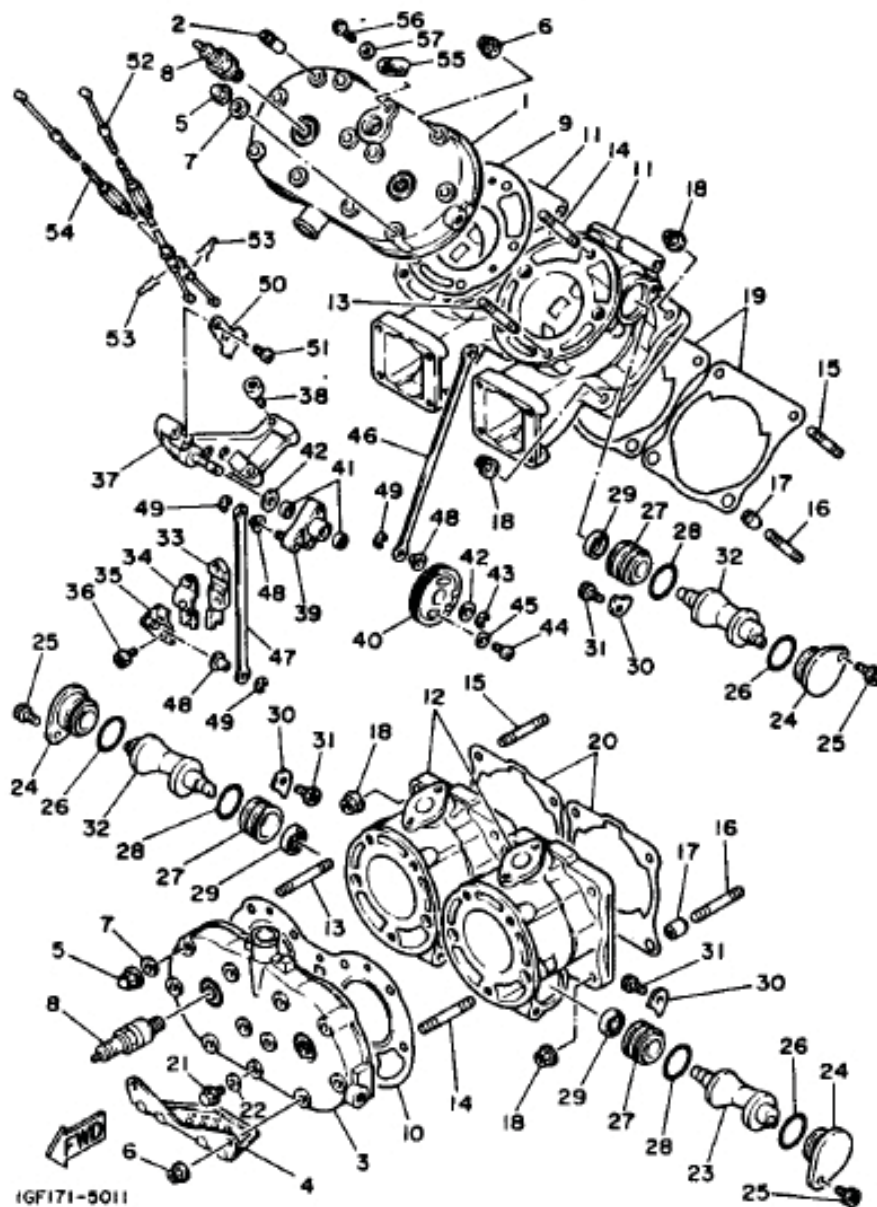


IGF171-5011

FIG. 1 CYLINDER

REF. NO.	PART NO.	DESCRIPTION	Q'TY	REMARKS
1	47X-11111-00	HEAD, cylinder 1	1	
2	47X-12584-00	JOINT, hose 3	1	
3	47X-11121-00	HEAD, cylinder 2	1	
4	47X-1111M-00	COVER 1	1	
5	90176-08026	NUT, crown	8	
6	90179-08299	NUT	12	
7	90201-08087	WASHER, plate	8	
8	94702-00251	PLUG, spark (NGK BR9HS)	4	
9	47X-11181-00	GASKET, cylinder head 1	1	
10	47X-11182-00	GASKET, cylinder head 2	1	
11	47X-W1131-01	CYLINDER	2	
12	47X-W1135-01	CYLINDER2	2	
13	90116-08448	BOLT, stud	8	
14	90116-08392	BOLT, stud	12	
15	90116-08318	BOLT, stud	8	
16	90116-08388	BOLT, stud	8	
17	99510-10114	PIN, dowel	8	
18	90179-08299	NUT	16	
19	47X-11351-00	GASKET, cylinder	2	
20	47X-11352-00	GASKET, cylinder 2	2	
21	95026-08012	BOLT, flange	1	
22	90430-08119	GASKET	1	
23	47X-1131A-00	VALVE 1	2	
24	47X-1131E-00	HOLDER 1	4	
25	91316-05012	BOLT	4	
26	93210-27370	O-RING	4	
27	47X-1131F-00	HOLDER 2	4	
28	93210-27370	O-RING	4	

B2

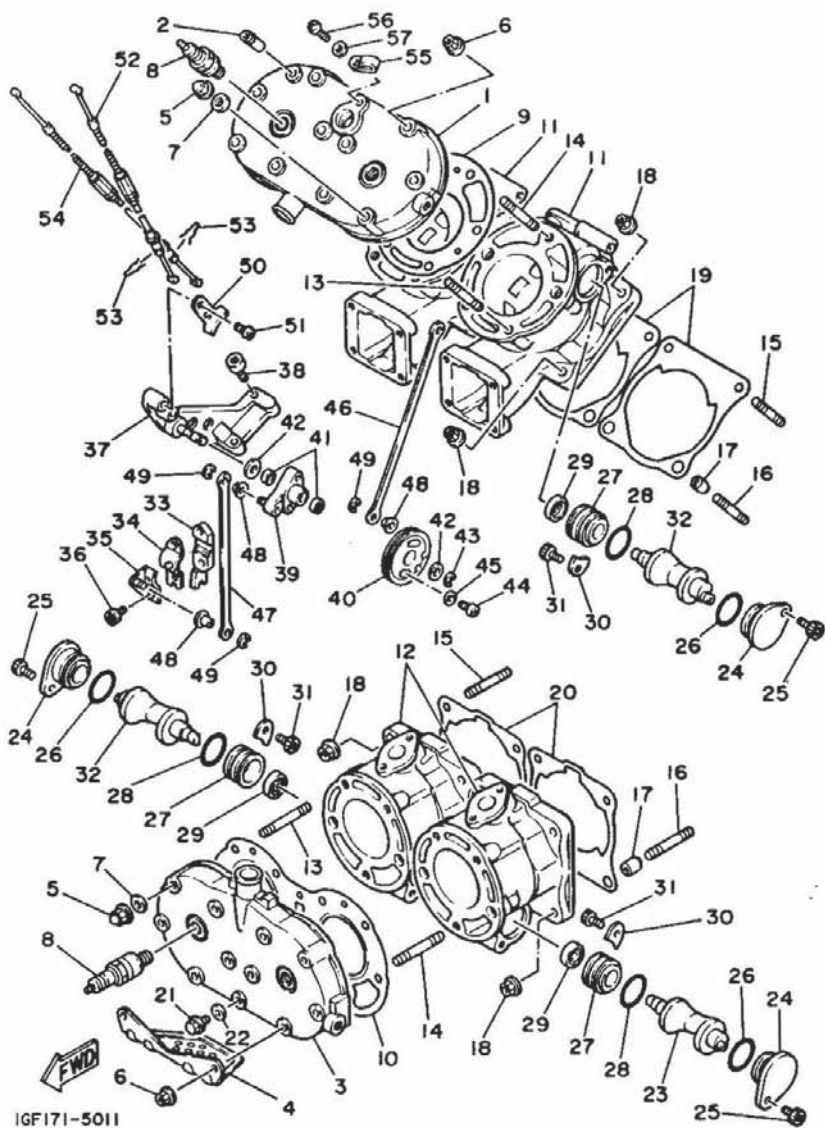


1GF171-5011

FIG. 1 CYLINDER

REF. NO.	PART NO.	DESCRIPTION	Q'TY	REMARKS
29	93108-23010	OIL SEAL	4	
30	47X-11915-00	PLATE, thrust 1	4	
31	91311-05008	BOLT	4	
32	47X-1132A-00	VALVE 2	2	
33	47X-1131H-00	JOINT 1	2	
34	47X-1131J-00	JOINT 2	2	
35	47X-1131K-00	JOINT 3	2	
36	91312-05012	BOLT	4	
37	47X-1135A-00	BRACKET	1	
38	91316-06020	BOLT	2	
39	47X-1132E-01	PULLEY 1	1	
40	47X-1132F-01	PULLEY 2	1	
41	93104-08040	OIL SEAL	2	
42	90201-08403	WASHER, plate	2	
43	99001-07600	CIRCLIP	1	
44	98501-05020	SCREW, pan head	2	
45	92901-05600	WASHER, plate	2	
46	1VU-1131H-00	JOINT 1	1	
47	1VU-1131J-00	JOINT 2	1	
48	90201-06431	WASHER, plate	4	
49	99001-05600	CIRCLIP	4	
50	47X-1131U-02	HOLDER 3	1	
51	92501-06012	SCREW, pan head	2	
52	47X-1133E-00	CABLE, pulley 1	1	
53	90468-08086	CLIP	2	
54	47X-1133F-00	CABLE, pulley 2	1	
55	90461-06103	CLAMP	1	
56	92506-06010	SCREW, pan head	1	

B3

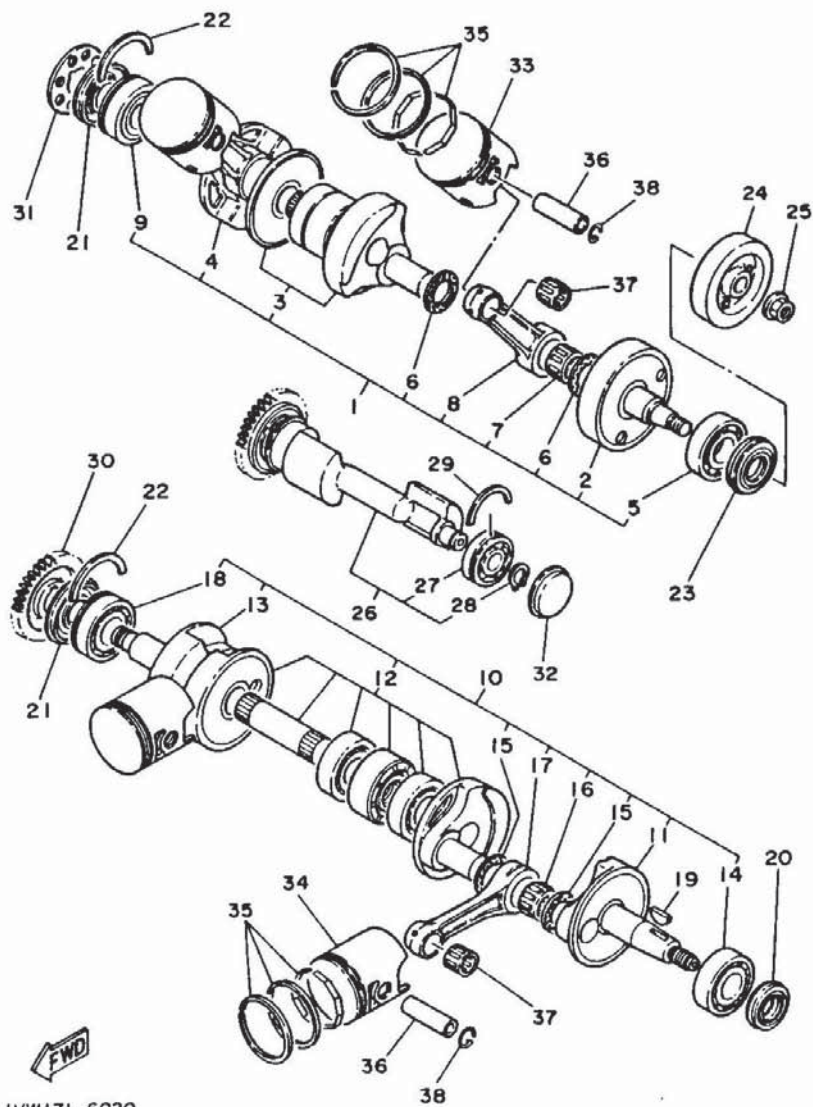


IGF171-5011

FIG. 1 CYLINDER

REF. NO.	PART NO.	DESCRIPTION	Q'TY	REMARKS
57	92906-06600	WASHER, plate	1	

B4

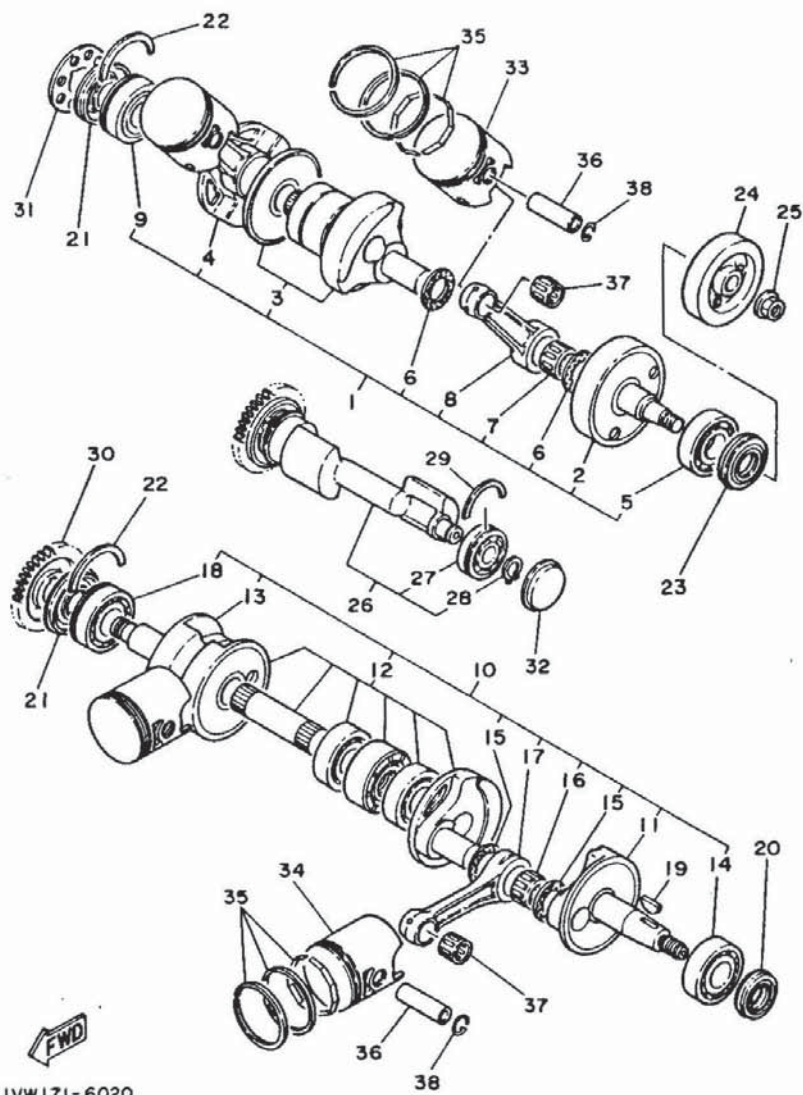


IVW171-6020

FIG. 2 CRANKSHAFT, PISTON

REF. NO.	PART NO.	DESCRIPTION	Q'TY	REMARKS
1	1VU-11410-00	CRANKSHAFT	1	
2	1VU-11412-00	.CRANK 1	1	
3	1VU-11409-12	.CRANK SUB ASSY	1	
4	47X-11442-00	.CRANK 4	1	
5	93306-20577	.BEARING	1	
6	90209-22292	.WASHER	4	
7	93310-522L4	.BEARING, cylindrical	2	
8	47X-11651-00	.ROD, connecting	2	
9	93306-20565	.BEARING	1	
10	47X-11420-02	CRANKSHAFT	1	
11	47X-11452-00	.CRANK 5	1	
12	47X-11409-11	.CRANK SUB ASSY	1	
13	47X-11442-00	.CRANK 4	1	
14	93306-20577	.BEARING	1	
15	90209-22292	.WASHER	4	
16	93310-522L4	.BEARING, cylindrical	2	
17	47X-11651-00	.ROD, connecting	2	
18	93306-20565	.BEARING	1	
19	90280-05033	KEY, woodruff	1	
20	93103-25108	OIL SEAL	1	
21	93103-35149	OIL SEAL	2	
22	93410-53068	CIRCLIP	2	
23	93102-25364	OIL SEAL	1	
24	1VU-11464-00	WEIGHT 2	1	
25	90179-12421	NUT	1	
26	1VU-11500-00	BALANCER ASSY	1	
27	93306-20334	.BEARING	1	
28	99009-17400	.CIRCLIP	1	

B5



IVW171-6020

FIG. 2 CRANKSHAFT. PISTON

REF. NO.	PART NO.	DESCRIPTION	Q'TY	REMARKS
29	93410-40069	CIRCLIP	1	
30	1VU-11536-00	GEAR, drive	1	
31	1VU-11571-00	FLYWHEEL	1	
32	90338-42165	PLUG	1	
33	47X-11631-00-35	PISTON (STD)	2	
	47X-11635-00	PISTON (0.25MM O/S)	2	AP
	47X-11636-00	PISTON (0.50MM O/S)	2	AP
34	47X-11642-00-35	PISTON 2 (STD)	2	
	47X-11645-00	PISTON (1ST O/S 0.25MM)	2	AP
	47X-11646-00	PISTON (2ND O/S 0.50MM)	2	AP
35	47X-11610-00	PISTON RING SET (STD)	4	
	47X-11610-10	PISTON RING SET (1ST O/S)	4	AP
	47X-11610-20	PISTON RING SET (2ND O/S)	4	AP
36	4Y2-11633-00	PIN, piston	4	
37	93310-316H7	BEARING, cylindrical	4	
38	4V2-11634-00	CLIP, piston pin	8	

B6

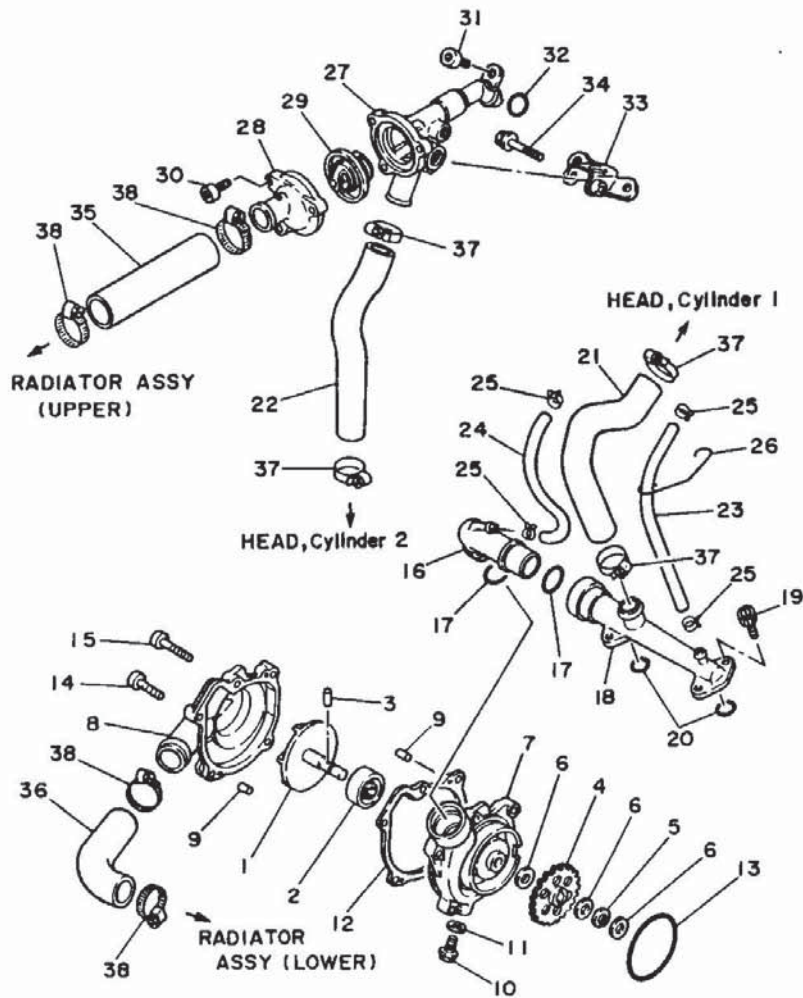


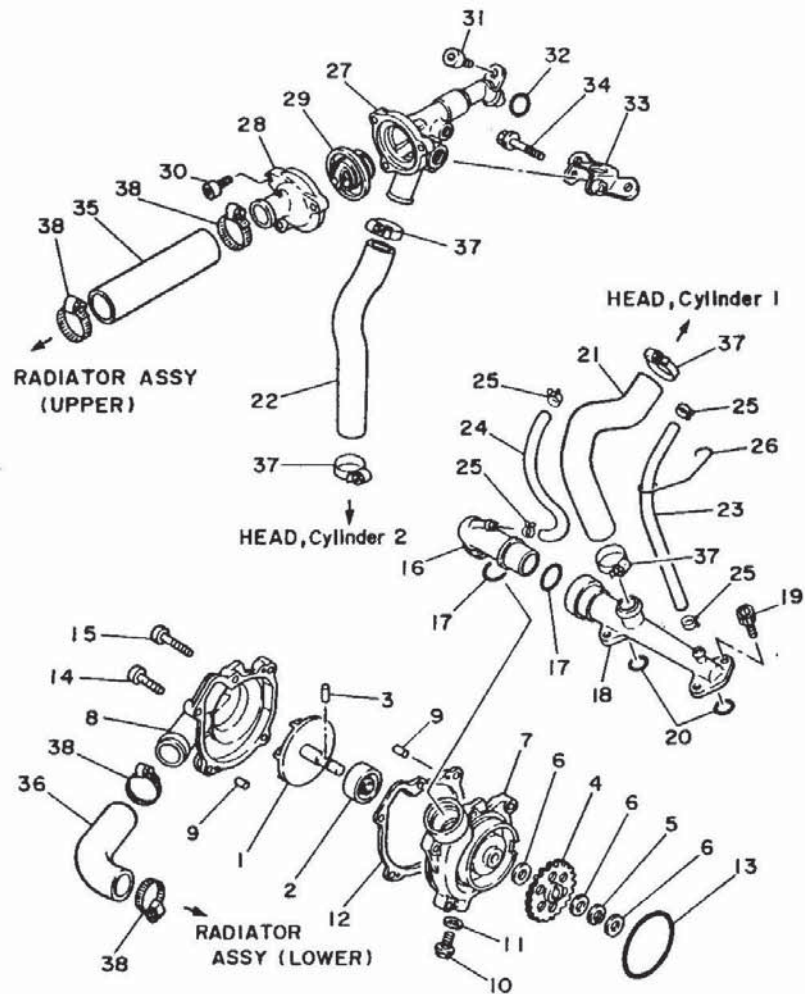
FIG. 3 WATER PUMP, PIPING

REF. NO.	PART NO.	DESCRIPTION	Q'TY	REMARKS
1	47X-12450-00	IMPELLER SHAFT ASSY	1	
2	93103-10147	OIL SEAL	1	
3	93603-14179	PIN, dowel	1	
4	47X-12459-01	GEAR, impeller shaft	1	
5	93430-08036	CIRCLIP	1	
6	90201-090J9	WASHER, plate	3	
7	47X-12421-00	HOUSING, water pump	1	
8	47X-12422-00	COVER, housing	1	
9	93604-10011	PIN, dowel	2	
10	95026-08012	BOLT, flange	1	
11	90430-08119	GASKET	1	
12	47X-12428-00	GASKET, housing cover 2	1	
13	93210-62274	O-RING	1	
14	91316-06025	BOLT	3	
15	91316-06035	BOLT	2	
16	47X-12482-00	PIPE 2	1	
17	93210-25070	O-RING	2	
18	47X-12469-00	JOINT 1	1	
19	90110-06084	BOLT, hexagon socket head	4	
20	93210-19123	O-RING	2	
21	47X-12576-00	HOSE 1	1	
22	47X-12577-00	HOSE 2	1	
23	47X-12578-00	HOSE 3	1	
24	47X-12552-00	HOSE 8	1	
25	90467-09088	CLIP	4	
26	90465-02271	CLAMP	1	
27	47X-12417-00	HOUSING, thermostat	1	
28	47X-12413-00	COVER, thermostat	1	



IGG010-5031

B7

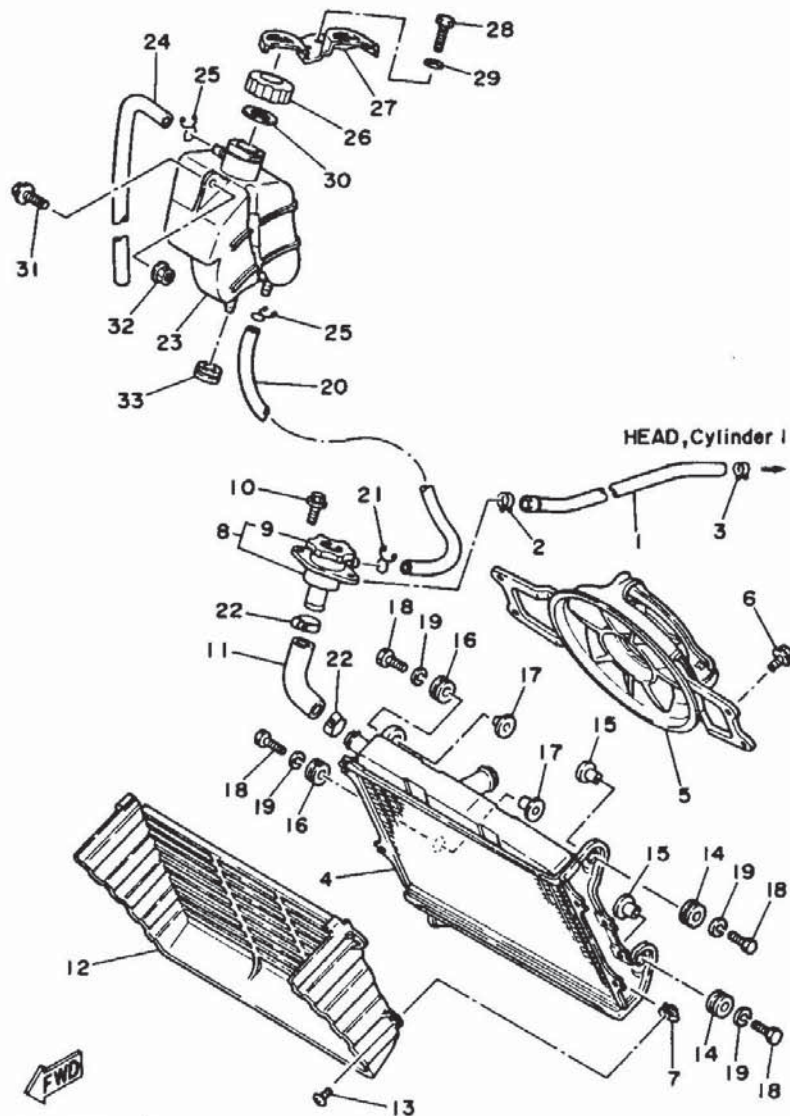


IGG010-5031

FIG. 3 WATER PUMP. PIPING

REF. NO.	PART NO.	DESCRIPTION	Q'TY	REMARKS
29	47X-12411-00	THERMOSTAT	1	
30	91316-06020	BOLT	3	
31	91316-06012	BOLT	1	
32	93210-15414	O-RING	1	
33	47X-12443-00	STAY	1	
34	95806-06040	BOLT, flange	1	
35	47X-12579-00	HOSE 4	1	
36	47X-12588-00	HOSE 5	1	
37	90460-27270	CLAMP, hose	4	
38	90460-31269	CLAMP, hose	4	

B8

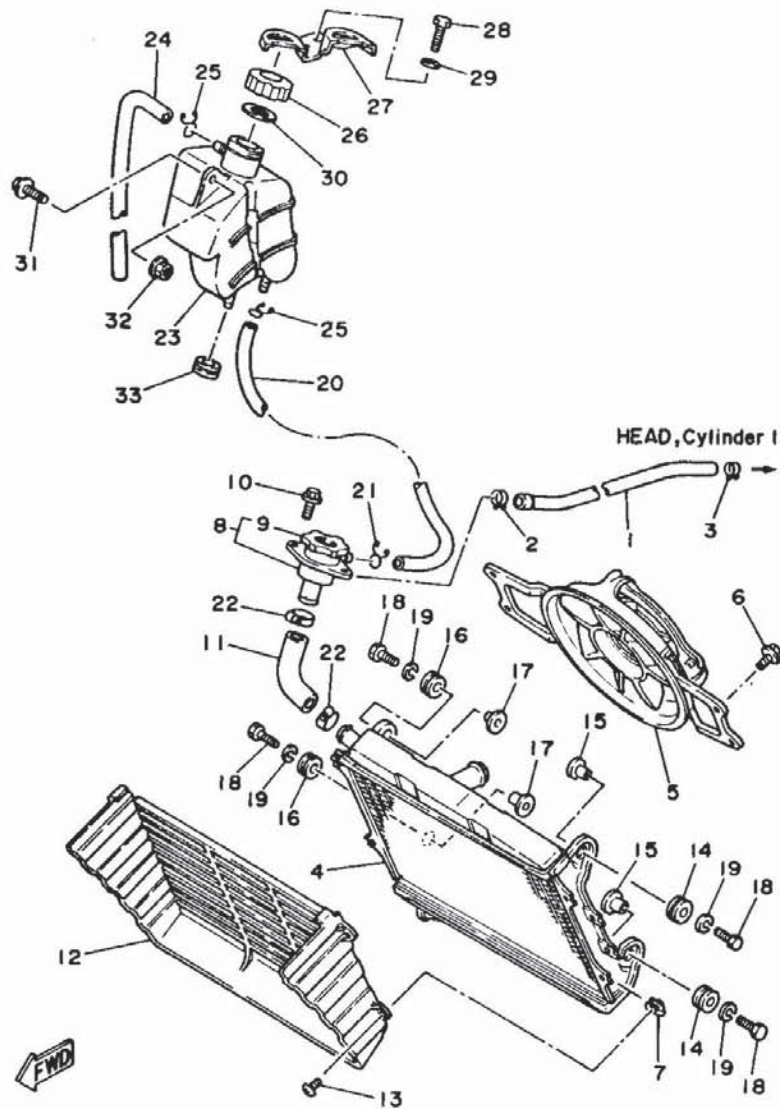


IGF171-5040

FIG. 4 RADIATOR. HOSE

REF. NO.	PART NO.	DESCRIPTION	Q'TY	REMARKS
1	47X-12589-00	HOSE, 6	1	
2	90467-13083	CLIP	1	
3	90467-11090	CLIP	1	
4	47X-12461-00	RADIATOR ASSY	1	
5	47X-12405-00	BLOWER ASSY	1	
6	11H-12675-00	BOLT, blower holding	4	
7	22W-21791-00	NUT	4	
8	47X-12590-01	CONDUCTION ASSY	1	
9	33M-12462-00	.CAP, radiator	1	
10	90119-06110	BOLT, with washer	2	
11	47X-12551-00	HOSE 7	1	
12	47X-12467-01	COVER, radiator	1	
13	90154-05013	SCREW, binding	4	
14	90480-19283	GROMMET	2	
15	90387-06033	COLLAR	2	
16	90480-18276	GROMMET	2	
17	90387-07037	COLLAR	2	
18	97306-06025	BOLT	4	
19	92906-06100	WASHER, spring	4	
20	47X-12463-01	PIPE, breather	1	
21	90467-10008	CLIP	1	
22	90460-27270	CLAMP, hose	2	
23	1GE-21871-00	TANK, recovery	1	
24	47X-21816-01	PIPE 1	1	
25	90467-09006	CLIP	2	
26	26H-21875-00	CAP	1	
27	47X-2172R-01	BRACKET 5	1	
28	97006-06012	BOLT	1	

B9



IGF171-5040

FIG. 4 RADIATOR. HOSE

REF. NO.	PART NO.	DESCRIPTION	Q'TY	REMARKS
29	92906-06600	WASHER, plate	1	
30	26H-21874-00	GASKET	1	
31	90119-06044	BOLT, with washer	1	
32	95706-06500	NUT, flange	1	
33	90480-22084	GROMMET	1	

B10

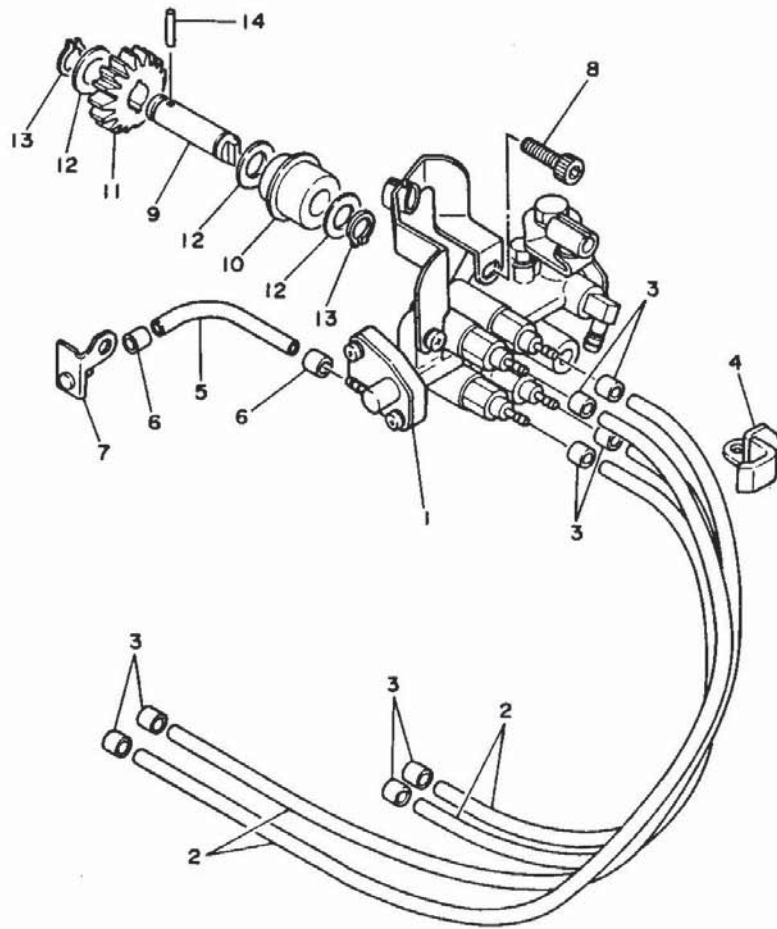


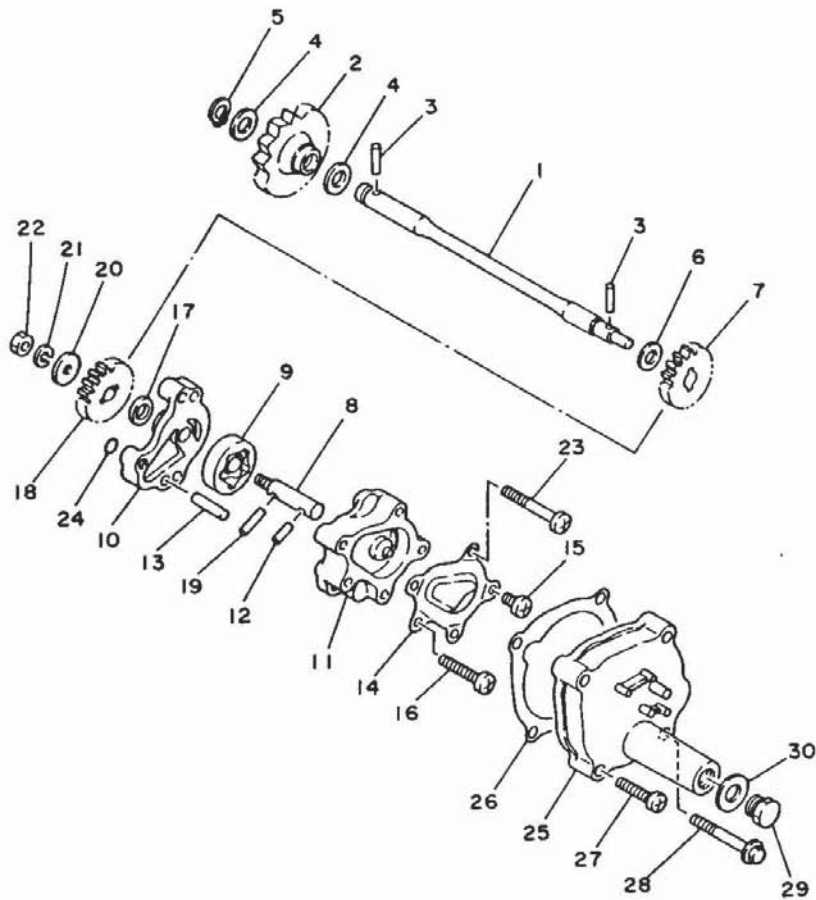
FIG. 5 OIL PUMP 1

REF. NO.	PART NO.	DESCRIPTION	Q'TY	REMARKS
1	47X-13100-02	OIL PUMP ASSY	1	
2	90445-055E5	HOSE	4	
3	90468-02033	CLIP	8	
4	90465-10269	CLAMP	1	
5	90445-05189	HOSE	1	
6	90468-02033	CLIP	2	
7	47X-15485-01	CLAMP	1	
8	90110-06093	BOLT, hexagon socket head	2	
9	47X-13226-00	SHAFT, drive gear	1	
10	47X-13176-01	METAL, worm shaft outer	1	
11	47X-13178-00	GEAR, pump drive	1	
12	90201-10119	WASHER, plate	3	
13	99009-10400	CIRCLIP	2	
14	93603-14026	PIN, dowel	1	



47X332-4050

B11



51X010-4060

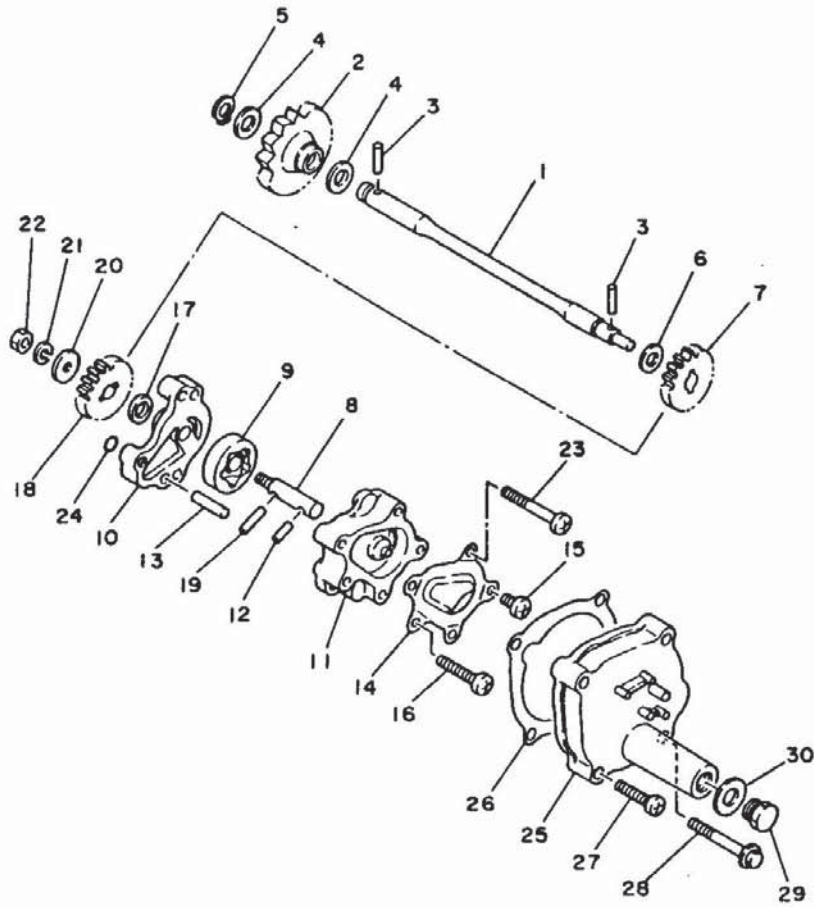
FIG. 6 OIL PUMP 2

REF. NO.	PART NO.	DESCRIPTION	Q'TY	REMARKS
1	47X-13342-00	SHAFT, idle gear	1	
2	47X-13324-00	GEAR, pump drive	1	
3	93603-14026	PIN, dowel	2	
4	90201-090J9	WASHER, plate	2	
5	93440-09139	CIRCLIP	1	
6	90201-08403	WASHER, plate	1	
7	47X-13325-00	GEAR, pump driven	1	
8	47X-13314-01	SHAFT, pump	1	
9	5H0-13310-00	ROTOR ASSY 1	1	
10	47X-13316-00	COVER, pump	1	
11	47X-13336-00	HOUSING, rotor	1	
12	93603-12030	PIN, dowel	1	
13	93606-22211	PIN, dowel	2	
14	47X-13411-00	STRAINER, oil	1	
15	98501-05010	SCREW, pan head	2	
16	98501-05030	SCREW, pan head	1	
17	90201-08403	WASHER, plate	1	
18	47X-13325-00	GEAR, pump driven	1	
19	93603-14026	PIN, dowel	1	
20	90201-06060	WASHER, plate	1	
21	92990-06100	WASHER, spring	1	
22	95601-06100	NUT, u	1	
23	98506-05040	SCREW, pan head	2	
24	93210-07540	O-RING	1	
25	47X-15416-00	COVER, oil pump	1	
26	47X-13329-00	GASKET, pump cover	1	
27	90153-06052	SCREW, hexagon	2	
28	90105-06076	BOLT, washer based	1	

B12

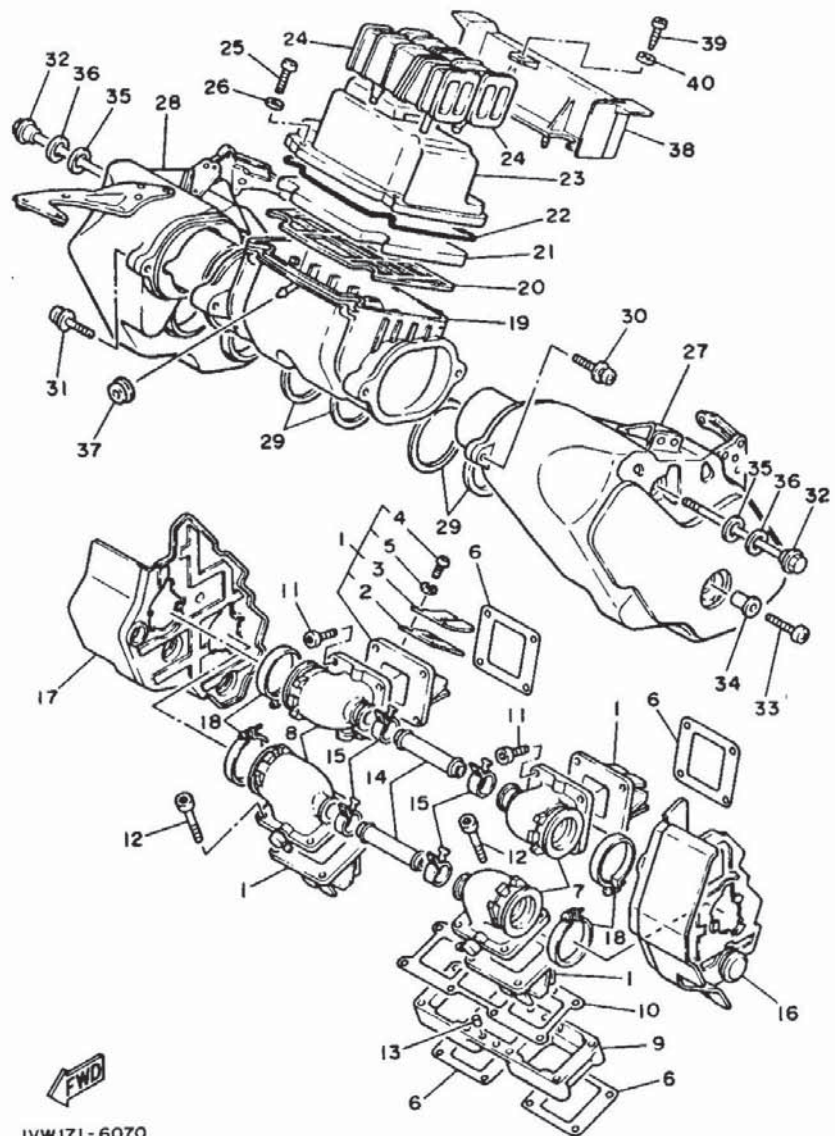
FIG. 6 OIL PUMP 2

REF. NO.	PART NO.	DESCRIPTION	Q'TY	REMARKS
29	90340-12105	PLUG, straight screw	1	
30	90201-12790	WASHER, plate	1	



51X010-4060

B13

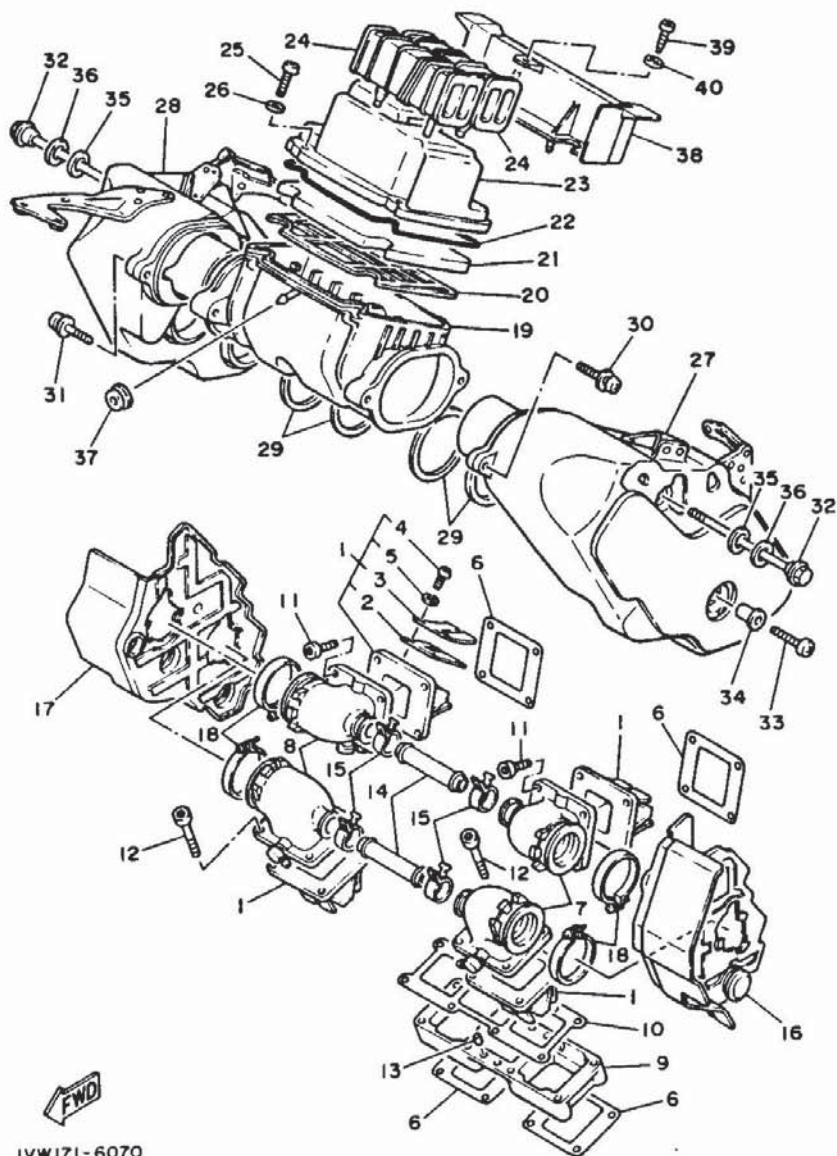


IVW171-6070

FIG. 7 INTAKE

REF. NO.	PART NO.	DESCRIPTION	Q'TY	REMARKS
1	23L-13610-01	REED VALVE ASSY	4	
2	4X8-13613-10	.REED, valve	2	
3	345-13616-70	.STOPPER, reed valve	2	
4	98501-03008	.SCREW, pan head	4	
5	92990-03100	.WASHER, spring	4	
6	314-13621-02	GASKET, valve seat	4	
7	47X-13555-00	MANIFOLD, intake	2	
8	47X-13565-00	JOINT, carburetor	2	
9	47X-13661-00	SEAT, intake valve 1	1	
10	47X-13645-00	GASKET, manifold 1	1	
11	91316-06025	BOLT	8	
12	91316-06050	BOLT	8	
13	93604-10011	PIN, dowel	2	
14	47X-14465-01	PIPE	2	
15	90467-20085	CLIP	4	
16	47X-12682-00	PROTECTOR, heat	1	
17	47X-12683-00	PROTECTOR, heat	1	
18	90460-42261	CLAMP, hose	4	
19	47X-14411-00	CASE, air cleaner 1	1	
20	47X-14472-00	PLATE, element	1	
21	47X-14451-00	ELEMENT, air cleaner	1	
22	47X-14457-00	SEAL	1	
23	47X-14412-00	CAP, cleaner case 1	1	
24	47X-14437-00	DUCT	2	
25	92501-06020	SCREW, pan head	4	
26	92901-06600	WASHER, plate	4	
27	16G-14431-00	SILENCER, intake 1	1	
28	16G-14441-00	SILENCER, intake 2	1	

B14



1VW171-6070

FIG. 7 INTAKE

REF. NO.	PART NO.	DESCRIPTION	Q'TY	REMARKS
29	1GE-1446R-00	SEAL	4	
30	90159-06110	SCREW, with washer	2	
31	90159-06056	SCREW, with washer	2	
32	90109-061A8	BOLT	2	
33	92506-06035	SCREW, pan head	4	
34	90387-067L2	COLLAR	4	
35	90202-13159	WASHER, plate	2	
36	90201-135J0	WASHER, plate	2	
37	90480-13197	GROMMET	1	
38	47X-14417-00	COVER 1	1	
39	97701-50116	SCREW, panhead tapping	1	
40	92990-05200	WASHER, plain	1	

B15

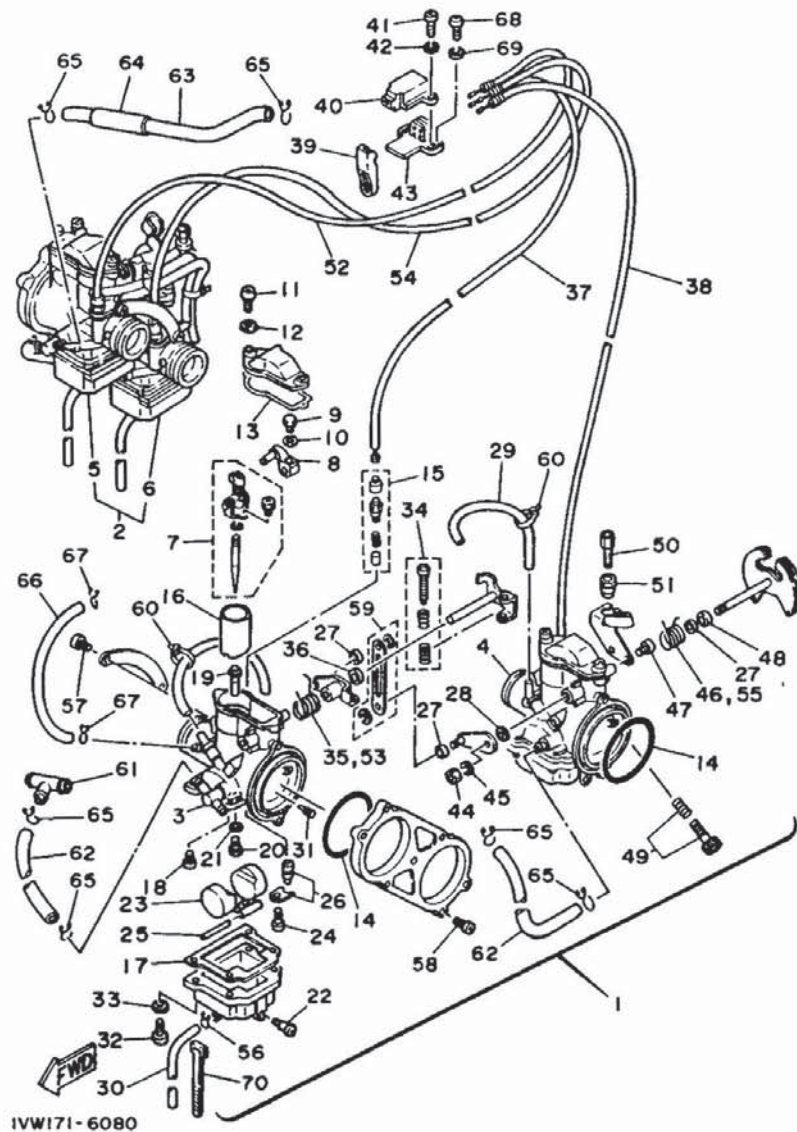


FIG. 8 CARBURETOR

REF. NO.	PART NO.	DESCRIPTION	Q'TY	REMARKS
1	1GE-14101-02	CARBURETOR ASSY 1	1	
2	1GE-14102-02	CARBURETOR ASSY 2	1	
3	1GE-14901-02	.CARBURETOR ASSY 1	1	
4	1GE-14902-02	.CARBURETOR ASSY 2	1	
5	1GE-14903-02	.CARBURETOR ASSY 3	1	
6	1GE-14904-02	.CARBURETOR ASSY 4	1	
7	47X-1490J-00	..NEEDLE SET	1	
8	47X-14292-00	..BRACKET 2	1	
9	583-14592-00	..SCREW	1	
10	92902-04100	..WASHER, spring	1	
11	98511-04012	..SCREW, pan head	2	
12	92902-04100	..WASHER, spring	2	
13	3Y1-14536-00	..GASKET	1	
14	47X-14147-00	..O-RING	1	
15	47X-1410A-00	..STARTER SET	1	
16	47X-14112-00	..VALVE, throttle 1	1	
17	47X-14184-00	..GASKET, float chamber	1	
18	193-14142-22	..JET, pilot (# 22.5)	1	
19	47X-14141-28	..NOZZLE, main	1	
20	137-14143-33	..JET, main (#165)	1	
21	137-14153-00	..WASHER, main jet	1	
22	12R-14191-00	..PLUG, drain	1	
23	4L0-14185-00	..FLOAT	1	
24	47X-14325-00	..SCREW, pan head	1	
25	537-14186-00	..PIN, float	1	
26	48H-14107-28	..NEEDLE VALVE SET	1	
27	256-14997-00	..SEAL	1	UR # 1, 3
	256-14997-00	..SEAL	2	UR # 2, 4

C2

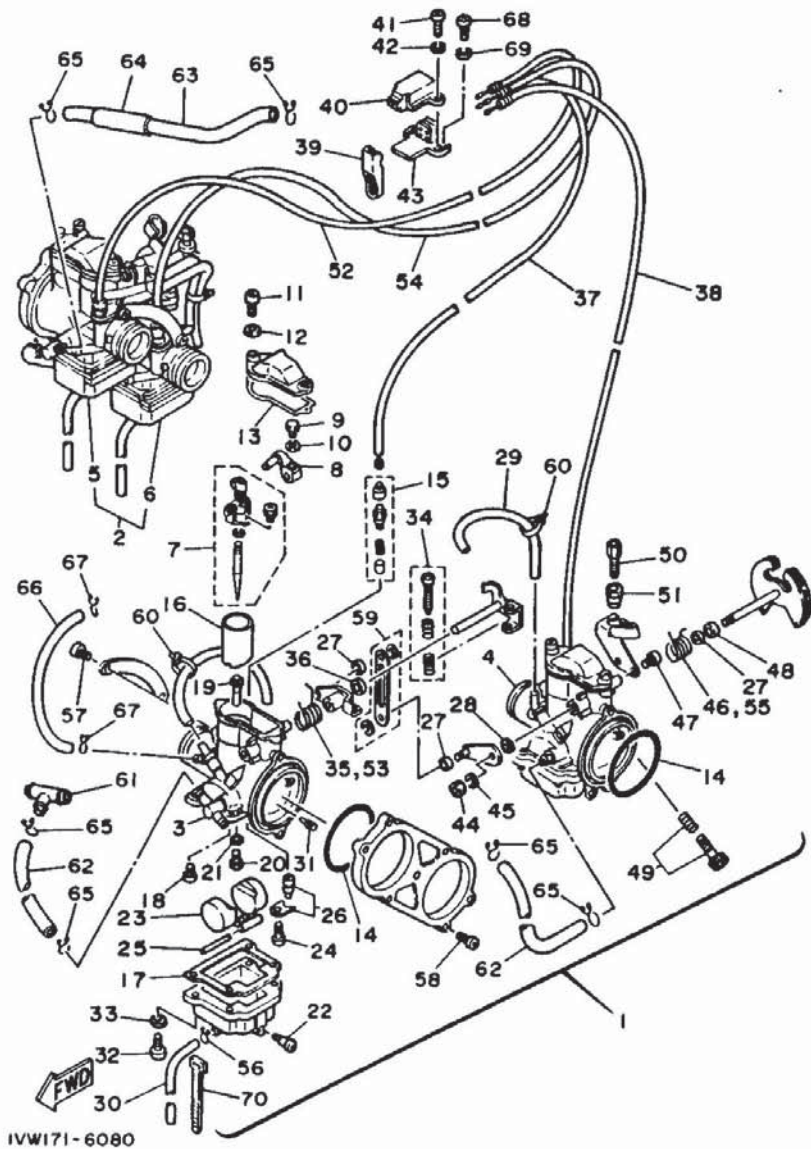
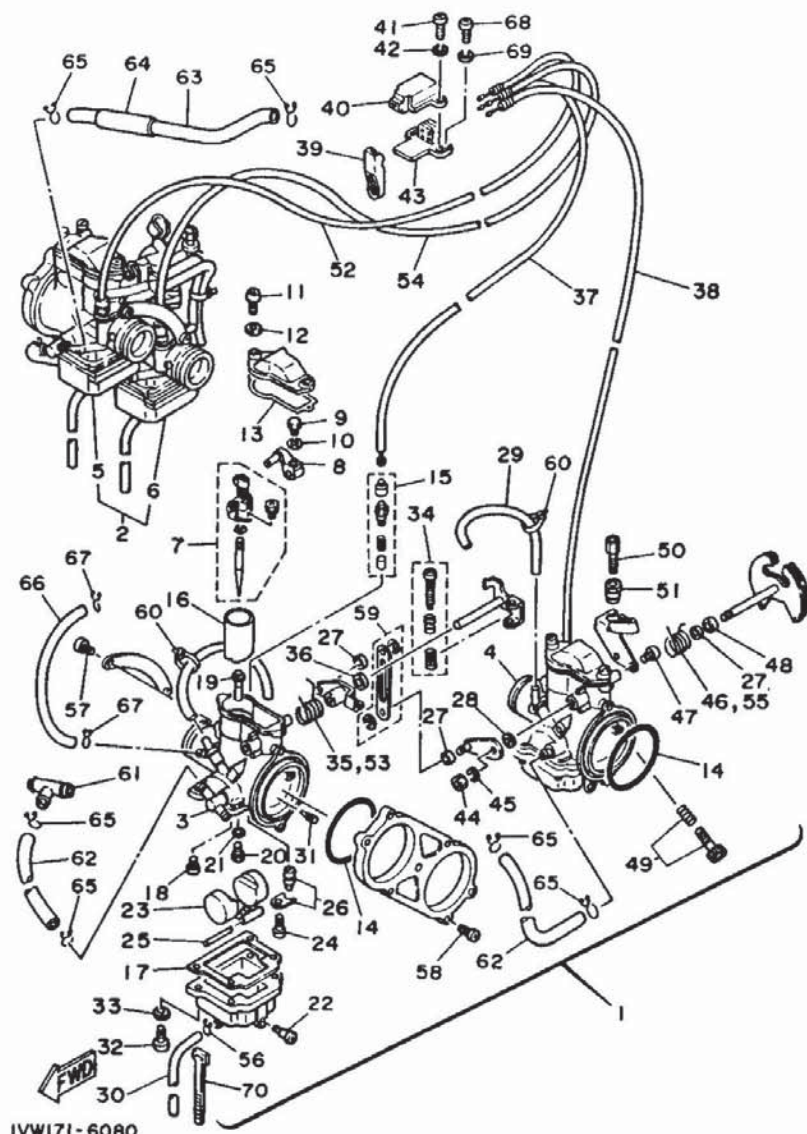


FIG. 8 CARBURETOR

REF. NO.	PART NO.	DESCRIPTION	Q'TY	REMARKS
28	1A8-14953-00	..WASHER	1	
29	1E6-14197-00	..PIPE	1	
30	1GE-14196-00	..PIPE	1	UR # 1, 2
	1GE-14193-00	..PIPE	1	UR # 3, 4
31	239-14172-11	..PILOT JET, air (1.1)	1	
32	98501-04014	..SCREW, pan head	4	
33	92902-04100	..WASHER, spring	4	
34	47X-1490K-00	..STOP SCREW SET	1 # 1	
35	1GE-14931-00	..SPRING, throttle lever	1 # 1	
36	47X-14918-00	..RING	1 # 1, 3	
37	1GE-1412A-00	..CABLE, starter 1	1 # 1	
38	1GE-1412E-00	..CABLE, starter 2	1 # 2	
39	47X-14201-00	..CHOKE LEVER COMP.	1 # 2	
40	47X-14205-00	..CAP, starter	1 # 2	
41	98503-04010	..SCREW, pan head	1 # 2	
42	92902-04100	..WASHER, spring	1 # 2	
43	47X-14204-00	..CASE, starter	1 # 2	
44	812-14594-00	..NUT	1 # 2, 4	
45	92902-08100	..WASHER, spring	1 # 2, 4	
46	1GE-14932-00	..SPRING, throttle 2	1 # 2	
47	98501-05010	..SCREW, pan head	2 # 2, 4	
48	4U8-14194-00	..RING	1 # 2, 4	
49	47X-14103-00	..THROTTLE SCREW SET	1 # 2, 4	
50	47X-14124-00	..SCREW, cable adjusting	1 # 2, 4	
51	47X-14161-00	..NUT, cable adjusting	1 # 2, 4	
52	1GE-1412F-00	..CABLE, starter 3	1 # 3	
53	1GG-14932-00	..SPRING, throttle 2	1 # 3	
54	1GE-1412G-00	..CABLE, starter 4	1 # 4	

C3



IVW171-6080

FIG. 8 CARBURETOR

REF. NO.	PART NO.	DESCRIPTION	Q'TY	REMARKS
55	1GG-14931-00	..SPRING, throttle lever	1 # 4	
56	8A7-14139-00	..CLIP, pipe	1	
57	98501-05010	.SCREW, pan head	2	
58	98501-05016	.SCREW, pan head	4	
59	47X-14504-00	.ROD SET	1	
60	35H-14139-00	.CLIP, pipe	2	
61	90413-10016	WAY 3	1	
62	90445-136A0	HOSE	3	
63	90445-12329	HOSE	1	
64	90446-15233	HOSE	1	
65	90467-11044	CLIP	8	
66	90445-095A1	HOSE	1	
67	90467-08003	CLIP	2	
68	98506-04010	SCREW, pan head	3	
69	92906-04100	WASHER, spring	3	
70	437-83936-10	BAND, switch cord	4	

C4

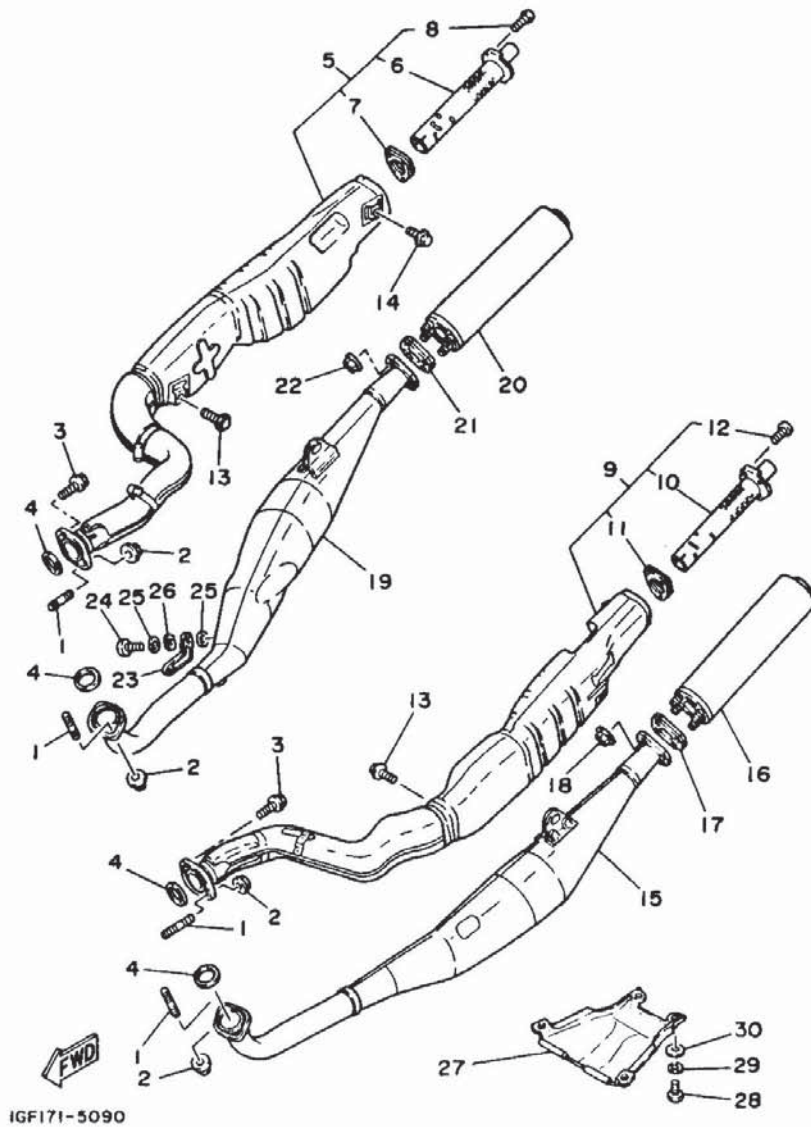
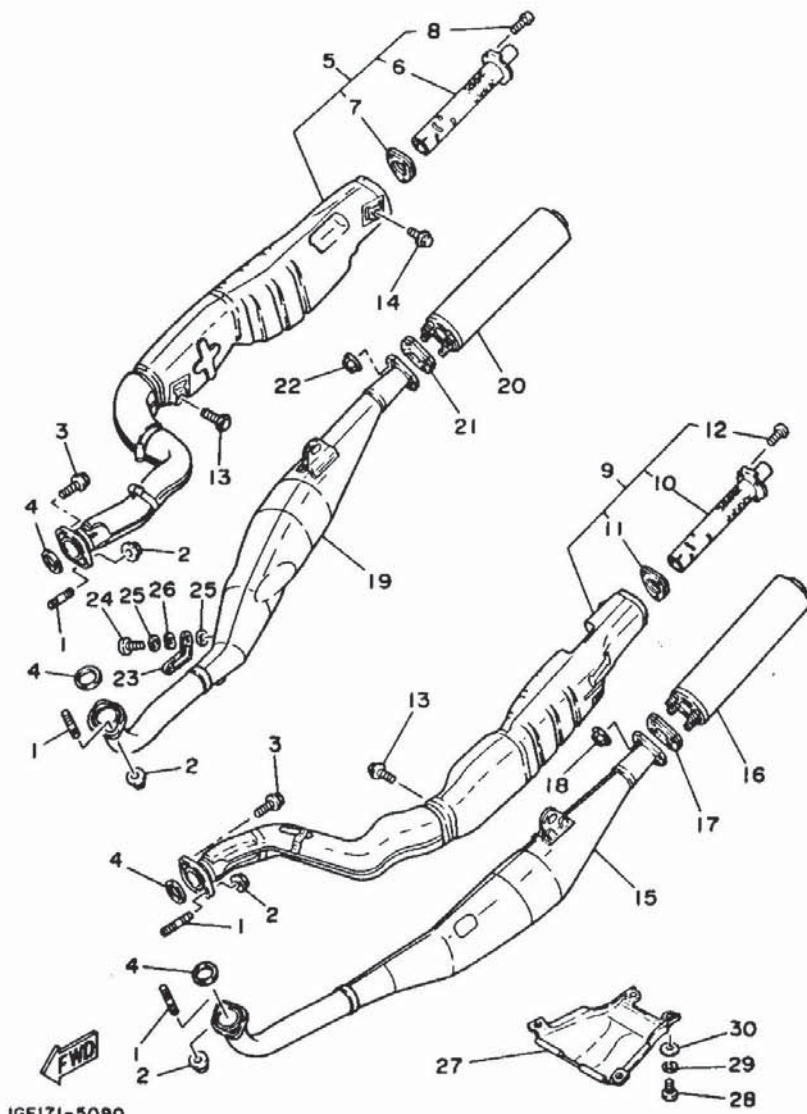


FIG. 9 EXHAUST

REF. NO.	PART NO.	DESCRIPTION	Q'TY	REMARKS
1	90116-08042	BOLT, stud	6	
2	90179-08299	NUT	6	
3	95021-08025	BOLT, flange	2	
4	152-14613-00	GASKET, exhaust pipe	4	
5	1GE-14610-00	EXHAUST PIPE ASSY 1	1	
6	1GE-14756-00	.SILENT PIECE	1	
7	47X-14755-00	.GASKET, silencer	1	
8	92501-06008	.SCREW, pan head	3	
9	1GE-14630-00	EXHAUST PIPE ASSY 3	1	
10	1GE-14756-00	.SILENT PIECE	1	
11	47X-14755-00	.GASKET, silencer	1	
12	92501-06008	.SCREW, pan head	3	
13	95801-08016	BOLT, flange	2	
14	95802-08012	BOLT, flange	2	
15	1GE-14621-00	PIPE, exhaust 2	1	
16	47X-14753-02	SILENCER, exhaust	1	
17	1GE-14714-00	GASKET, muffler	1	
18	90179-06476	NUT	4	
19	1GE-14641-00	PIPE, exhaust 4	1	
20	47X-14753-02	SILENCER, exhaust	1	
21	1GE-14714-00	GASKET, muffler	1	
22	90179-06476	NUT	4	
23	47X-14624-00	COVER, exhaust	1	
24	98906-06010	SCREW, bind	2	
25	583-14766-00	WASHER, protector	4	
26	90206-06060	WASHER, wave	2	
27	47X-14628-01	PROTECTOR, exhaust pipe	1	
28	97301-06020	BOLT	2	

C5

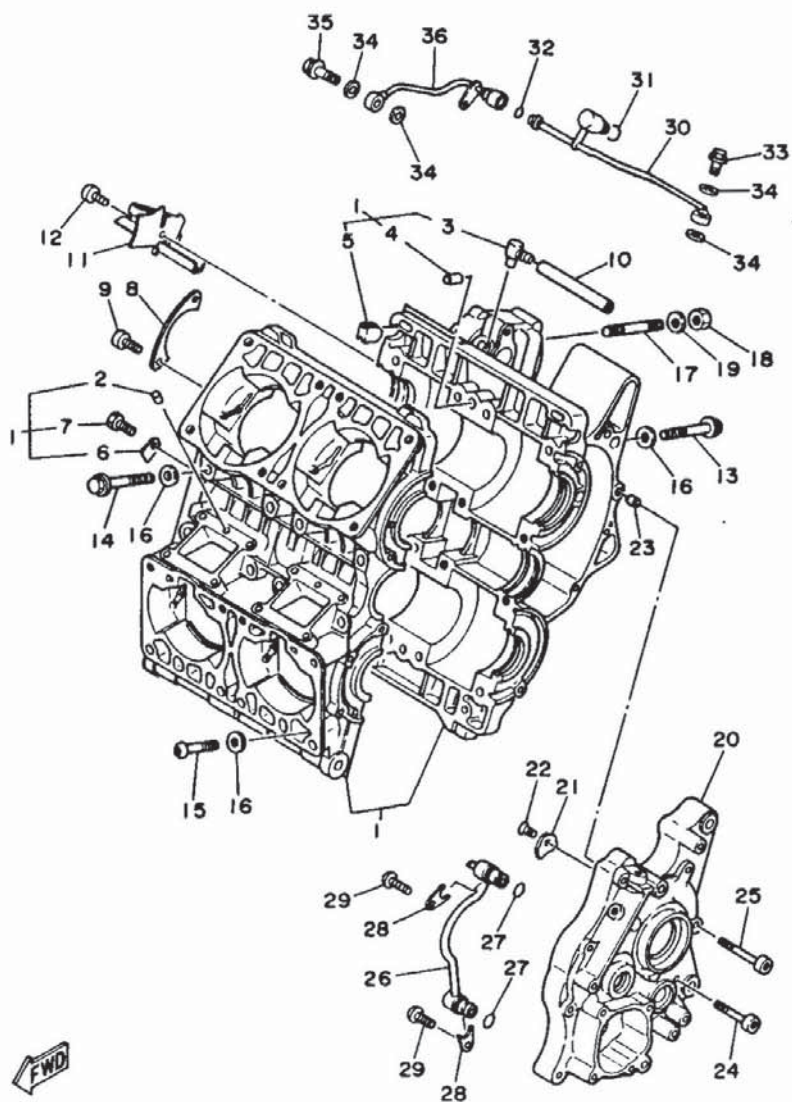


IGF171-5090

FIG. 9 EXHAUST

REF. NO.	PART NO.	DESCRIPTION	Q'TY	REMARKS
29	92990-06100	WASHER, spring	2	
30	92901-06600	WASHER, plate	2	

C6

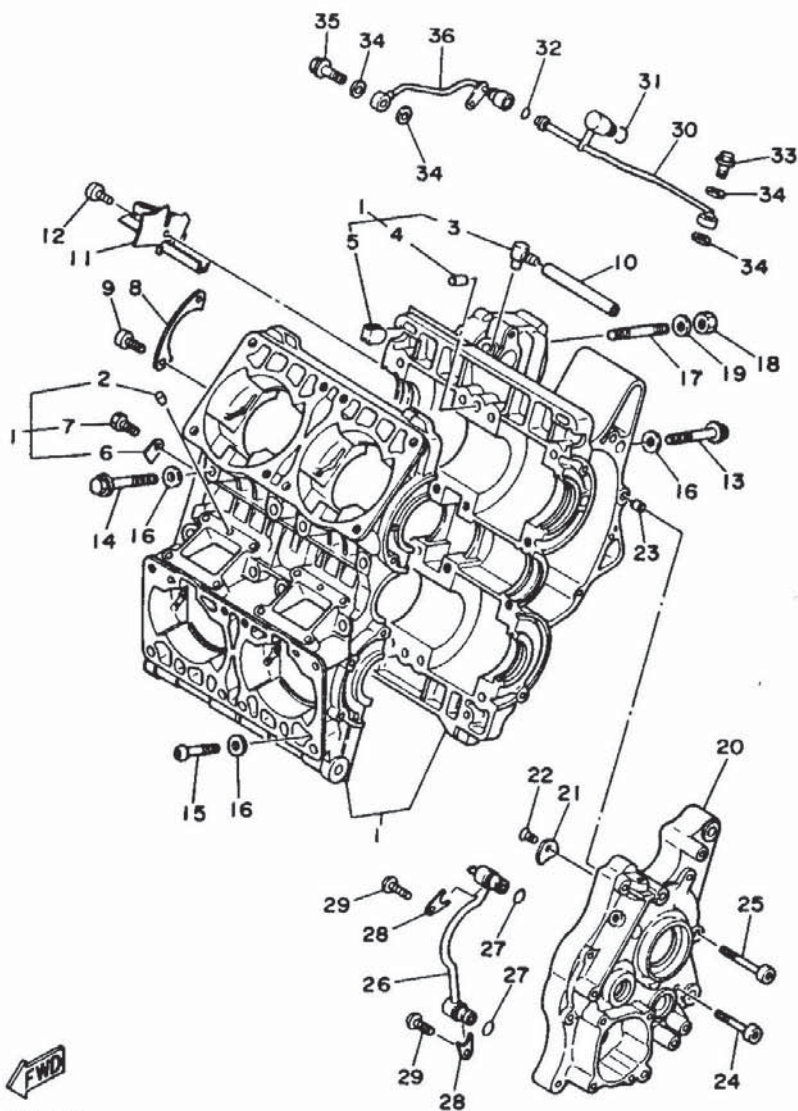


IGG010-5101

FIG. 10 CRANKCASE

REF. NO.	PART NO.	DESCRIPTION	Q'TY	REMARKS
1	47X-15100-00	CRANKCASE ASSY	1	
2	93604-10011	.PIN, dowel	2	
3	353-13115-01	.CONNECTOR, suction pipe	1	
4	99530-10014	.PIN, dowel	2	
5	47X-15487-01	.GROMMET 2	2	
6	47X-15113-00	.PLATE	1	
7	91316-06010	.BOLT	1	
8	47X-15381-00	PLATE, bearing cover	1	
9	91316-06014	BOLT	2	
10	90445-09064	HOSE	1	
11	47X-15437-01	SCRAPER, oil	1	
12	91316-06014	BOLT	1	
13	95811-08065	BOLT, flange	13	
14	95816-08070	BOLT, flange	2	
15	90149-08198	SCREW	2	
16	90201-08675	WASHER, plate	15	
17	90116-08154	BOLT, stud	1	
18	95301-08600	NUT	1	
19	90201-08675	WASHER, plate	1	
20	47X-15131-00	CRANKCASE 3	1	
21	47X-15383-00	PLATE, bearing cover	2	
22	92701-06012	SCREW, flat head	2	
23	99530-10014	PIN, dowel	2	
24	91316-06040	BOLT	6	
25	91316-06050	BOLT	2	
26	47X-13161-01	PIPE, delivery 1	1	
27	93210-09350	O-RING	2	
28	47X-13371-00	PLATE	2	

C7

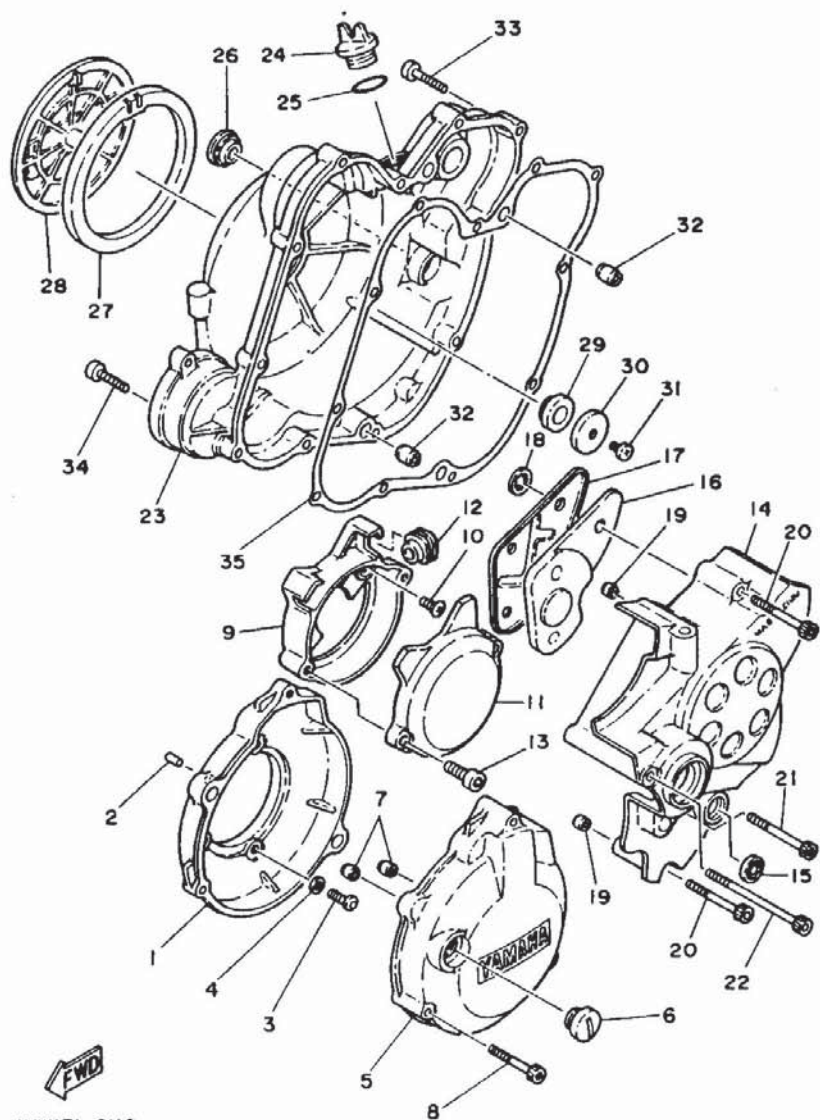


IGG010-5101

FIG. 10 CRANKCASE

REF. NO.	PART NO.	DESCRIPTION	Q'TY	REMARKS
29	91316-06012	BOLT	2	
30	47X-13171-00	PIPE, delivery 2	1	
31	93210-09350	O-RING	1	
32	93210-07438	O-RING	1	
33	90401-08093	BOLT, union	1	
34	90430-08119	GASKET	4	
35	90401-08105	BOLT, union	1	
36	47X-13181-01	PIPE, delivery 3	1	

C8

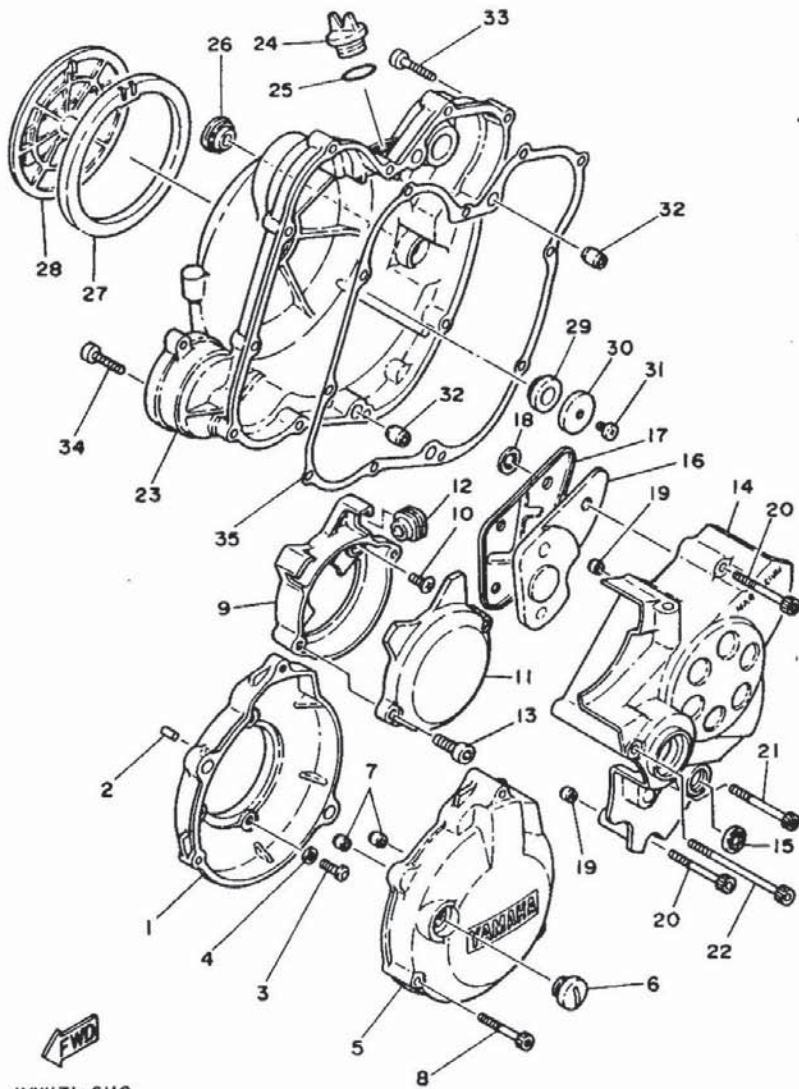


1VW171-6110

FIG. 11 CRANKCASE COVER 1

REF. NO.	PART NO.	DESCRIPTION	Q'TY	REMARKS
1	47X-15415-01	COVER, generator	1	
2	93604-10011	PIN, dowel	1	
3	90157-06067	SCREW, pan head	3	
4	90201-064J8	WASHER, plate	3	
5	47X-15425-02	COVER, generator 2	1	
6	90340-14079	PLUG, straight screw	1	
7	99530-10014	PIN, dowel	2	
8	90110-06097	BOLT, hexagon socket head	3	
9	1VU-15414-00	COVER, air cleaner	1	
10	92701-06012	SCREW, flat head	2	
11	1VU-15431-00	COVER, crankcase 3	1	
12	47X-13174-00	HOLDER, oil pipe	1	
13	91316-06020	BOLT	2	
14	47X-W1541-00	CRANKCASE COVER ASSY 1	1	
15	93104-11056	OIL SEAL	1	
16	47X-15326-00	DAMPER, engine mount 2	1	
17	47X-15427-00	COVER, cap 2	1	
18	90183-10034	NUT, spring	3	
19	99510-08016	PIN, dowel	2	
20	91316-06050	BOLT	4	
21	91316-06060	BOLT	1	
22	91316-06090	BOLT	1	
23	47X-15421-00	COVER, crankcase 2	1	
24	3Y1-15363-00	PLUG, oil	1	
25	93210-19123	O-RING	1	
26	3Y1-15361-00	GAUGE, level	1	
27	47X-15449-00	RING, rubber	1	
28	47X-15417-01	COVER, cap	1	

C9

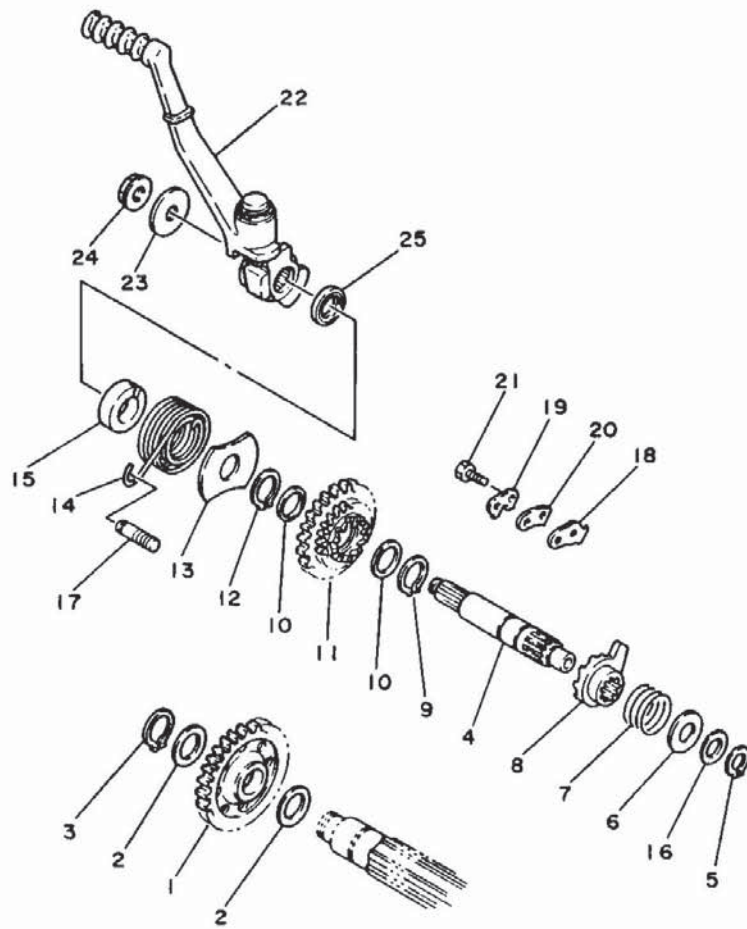


IVW171-6110

FIG. 11 CRANKCASE COVER 1

REF. NO.	PART NO.	DESCRIPTION	Q'TY	REMARKS
29	4H7-15486-00	GROMMET	1	
30	90209-06096	WASHER	1	
31	92501-06008	SCREW, pan head	1	
32	99530-10014	PIN, dowel	2	
33	91316-06030	BOLT	10	
34	91311-06025	BOLT	1	
35	47X-15461-00	GASKET, crankcase cover 2	1	

C10



47X332-4120

FIG. 12 STARTER

REF. NO.	PART NO.	DESCRIPTION	Q'TY	REMARKS
1	47X-15651-00	GEAR, kick idle	1	
2	90201-220J8	WASHER, plate	2	
3	99009-22400	CIRCLIP	1	
4	47X-15661-00	AXLE, kick	1	
5	99009-15400	CIRCLIP	1	
6	90201-155K6	WASHER, plate	1	
7	90501-16107	SPRING, compression	1	
8	2K7-15671-01	WHEEL, ratchet	1	
9	93410-20038	CIRCLIP	1	
10	90201-20685	WASHER, plate (0.5T)	2	
11	47X-15640-00	KICK GEAR ASSY	1	
12	99009-20400	CIRCLIP	1	
13	2K7-15676-00	COVER, spring	1	
14	90508-32668	SPRING, torsion	1	
15	2K7-15664-00	GUIDE, spring	1	
16	90201-15701	WASHER, plate (1.0T)	1	
17	2X6-15668-00	STOPPER	1	
18	47X-15674-00	GUIDE, ratchet wheel	1	
19	214-15686-00	WASHER, lock	1	
20	2K7-15668-00	STOPPER	1	
21	97311-06016	BOLT	2	
22	47X-15620-01	KICK CRANK ASSY	1	
23	90201-121J0	WASHER, plate	1	
24	90179-12244	NUT	1	
25	93102-20309	OIL SEAL	1	

C11

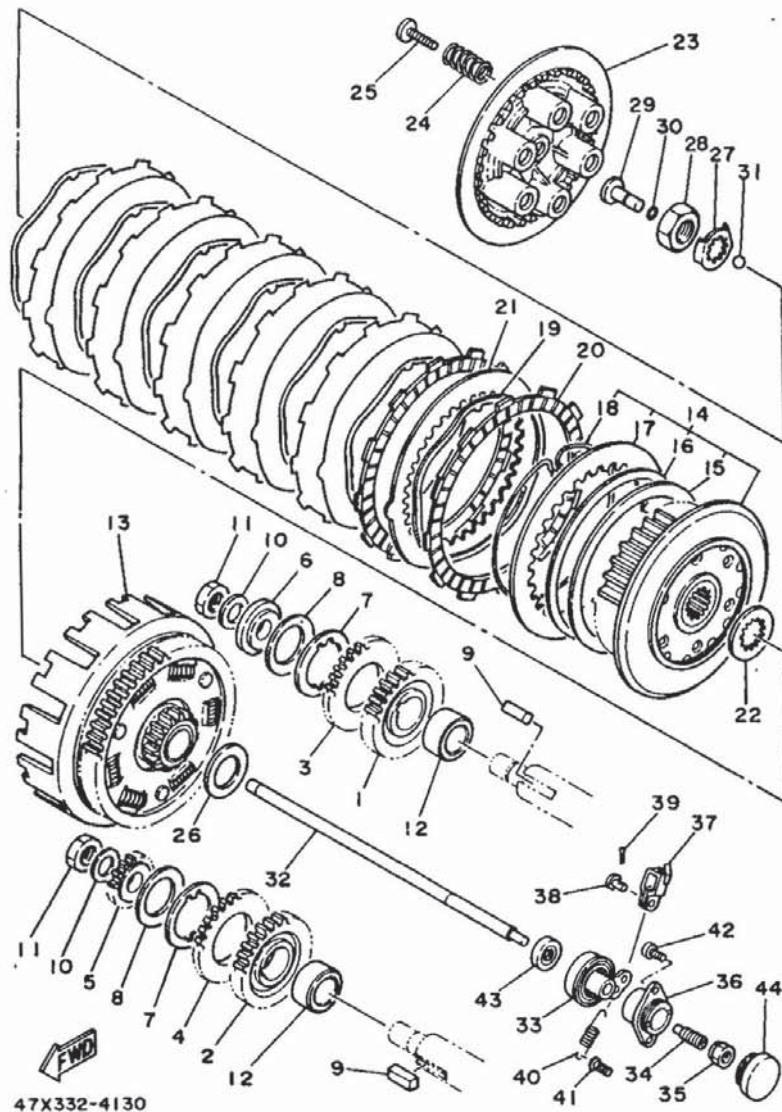


FIG. 13 CLUTCH

REF. NO.	PART NO.	DESCRIPTION	Q'TY	REMARKS
1	47X-16111-00	GEAR, primary drive	1	
2	47X-16131-00	GEAR, primary drive 2	1	
3	47X-16162-00	GEAR, primary drive 3	1	
4	47X-16162-00	GEAR, primary drive 3	1	
5	47X-12436-00	GEAR, drive	1	
6	47X-16118-00	PLATE, side 1	1	
7	47X-16114-00	PLATE, thrust 2	2	
8	47X-16119-01	SPRING, belleville	2	
9	90282-07057	KEY, straight	2	
10	90208-16019	WASHER, conical spring	2	
11	90170-16182	MUT	2	
12	90560-25259	SPACER	2	
13	47X-16150-00	PRIMARY DRIVEN GEAR COMP.	1	
14	47X-16370-00	CLUTCH BOSS ASSY	1	
15	2H7-16384-00	.PLATE, seat	1	
16	47X-16383-00	.SPRING, clutch boss	1	
17	2H7-16325-00	.PLATE, clutch 2	1	
18	47X-16385-00	.RING, clutch boss	1	
19	47X-16367-00	RING, cushion	7	
20	47X-16321-00	PLATE, friction	7	
21	47X-16324-00	PLATE, clutch 1	6	
22	47X-16164-00	PLATE, thrust 2	1	
23	47X-16351-00	PLATE, pressure 1	1	
24	90501-23142	SPRING, compression	6	
25	90151-06030	SCREW, countersunk	6	
26	90201-251GB	WASHER, plate	1	
27	90215-22244	WASHER, lock	1	
28	90170-20323	NUT	1	

C12

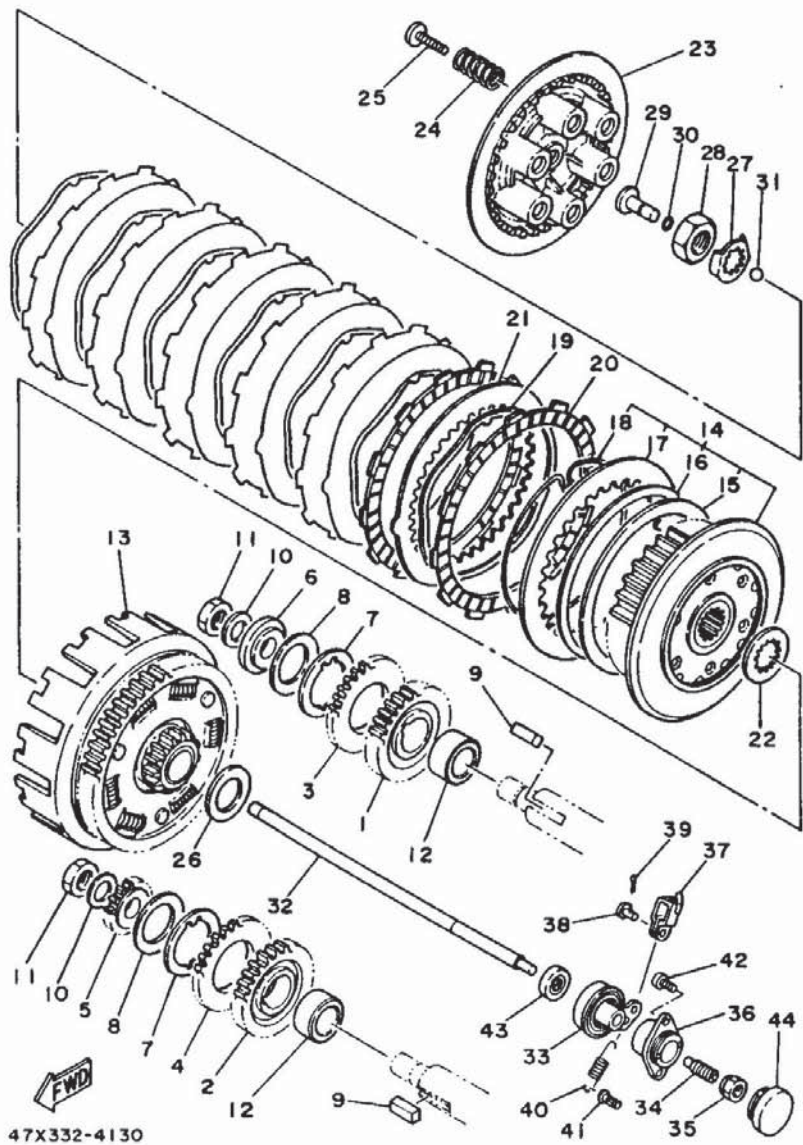
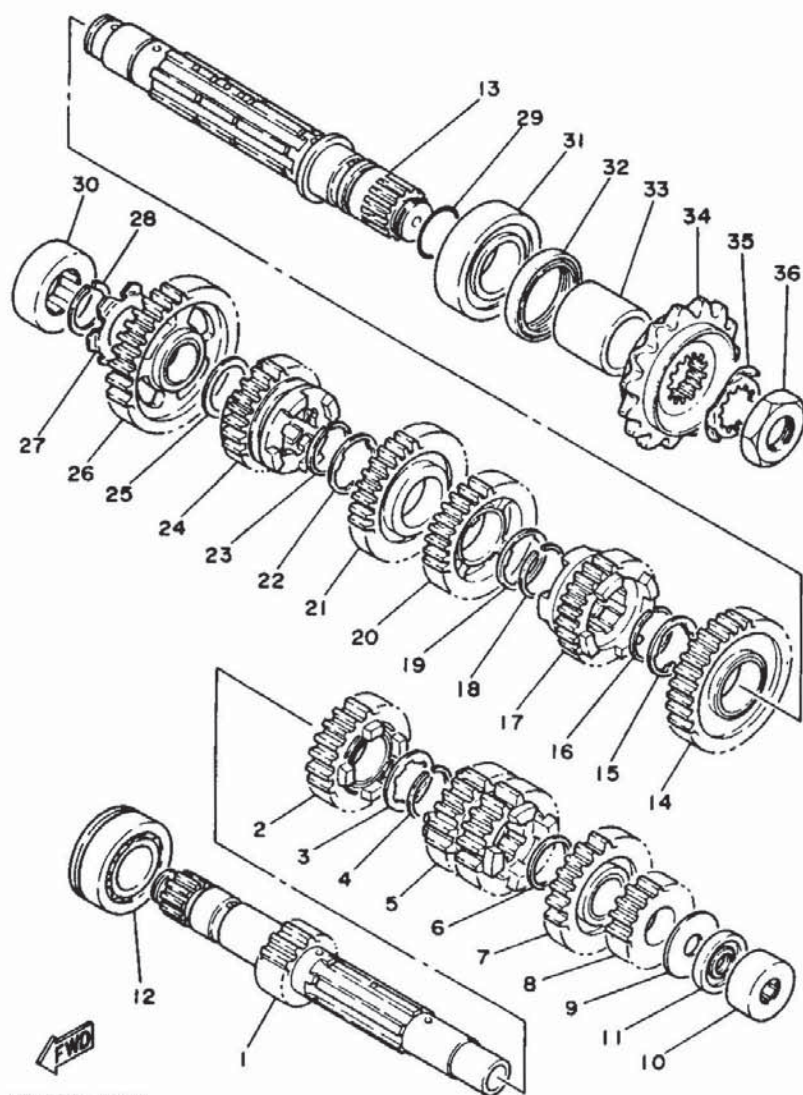


FIG. 13 CLUTCH

REF. NO.	PART NO.	DESCRIPTION	Q'TY	REMARKS
29	12R-16356-00	ROD, push 1	1	
30	93210-06632	O-RING	1	
31	93511-32017	BALL	1	
32	47X-16357-00	ROD, push 2	1	
33	47X-16340-00	PUSH LEVER ASSY	1	
34	90113-08021	BOLT, set	1	
35	90179-08179	NUT	1	
36	47X-16304-00	BALL SCREW HOUSING ASSY	1	
37	1J7-16389-00	JOINT	1	
38	90240-06005	PIN, clevis	1	
39	91401-10010	PIN, cotter	1	
40	90506-09232	SPRING, tension	1	
41	132-16346-00	HOOK, spring	1	
42	90157-05065	SCREW, pan head	2	
43	371-15389-00	SEAL, push rod	1	
44	1L9-15417-00	COVER, cap	1	

C13

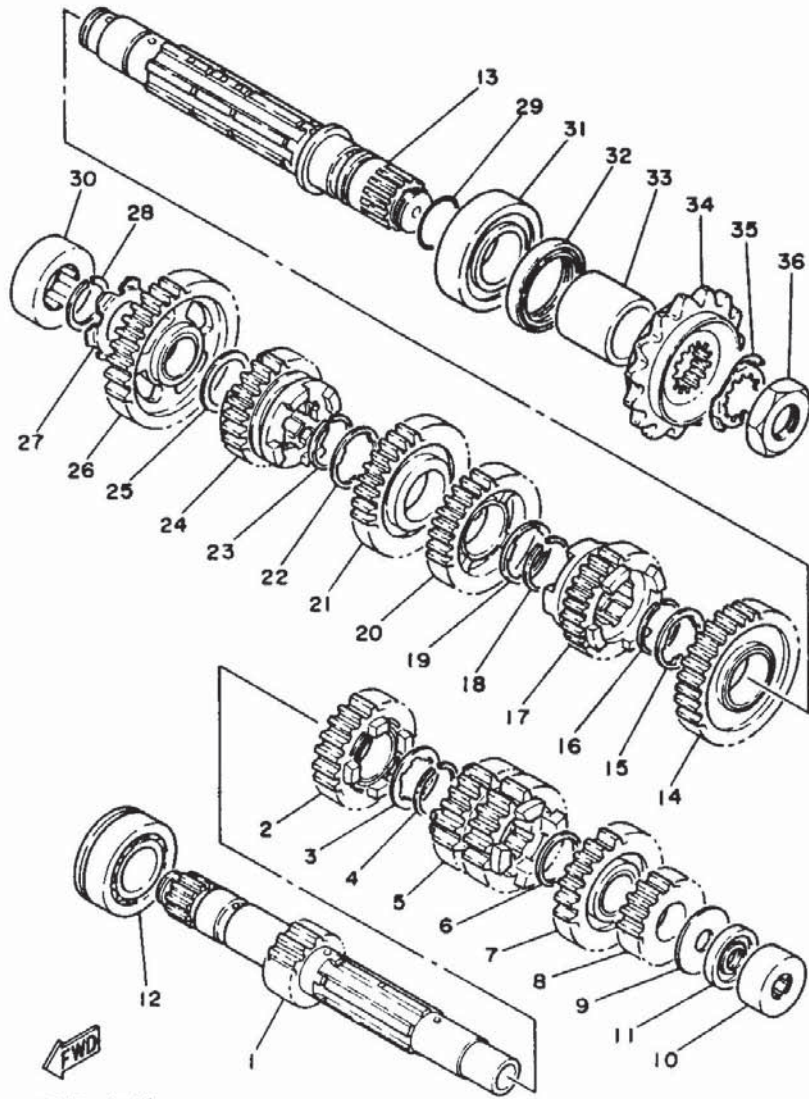


47X332-4140

FIG. 14 TRANSMISSION

REF. NO.	PART NO.	DESCRIPTION	Q'TY	REMARKS
1	47X-17411-00	AXLE, main (15T)	1	
2	47X-17151-00	GEAR, 5th pinion (23T)	1	
3	90209-25196	WASHER	1	
4	93440-28062	CIRCLIP	1	
5	47X-17131-00	GEAR, 3rd/4th pinion (22T,24T)	1	
6	90201-230J6	WASHER, plate	1	
7	47X-17161-00	GEAR, 6th pinion (24T)	1	
8	47X-17121-00	GEAR, 2nd pinion (19T)	1	
9	90201-200J7	WASHER, plate	1	
10	93311-42056	BEARING, cylindrical	1	
11	93104-20084	OIL SEAL	1	
12	93305-20504	BEARING (B5205)	1	
13	47X-17421-00	AXLE, drive	1	
14	47X-17221-00	GEAR, 2nd wheel (32T)	1	
15	90209-27268	WASHER	1	
16	93440-30077	CIRCLIP	1	
17	47X-17261-00	GEAR, 6th wheel (23T)	1	
18	93440-30077	CIRCLIP	1	
19	90209-27192	WASHER	1	
20	47X-17241-00	GEAR, 4th wheel (28T)	1	
21	47X-17231-00	GEAR, 3rd wheel (30T)	1	
22	90209-27192	WASHER	1	
23	93440-30077	CIRCLIP	1	
24	47X-17251-00	GEAR, 5th wheel (24T)	1	
25	90201-25290	WASHER, plate	1	
26	47X-17211-00	GEAR, 1st wheel (36T)	1	
27	90209-25260	WASHER	1	
28	93410-25010	CIRCLIP	1	

C14



47X332-4140

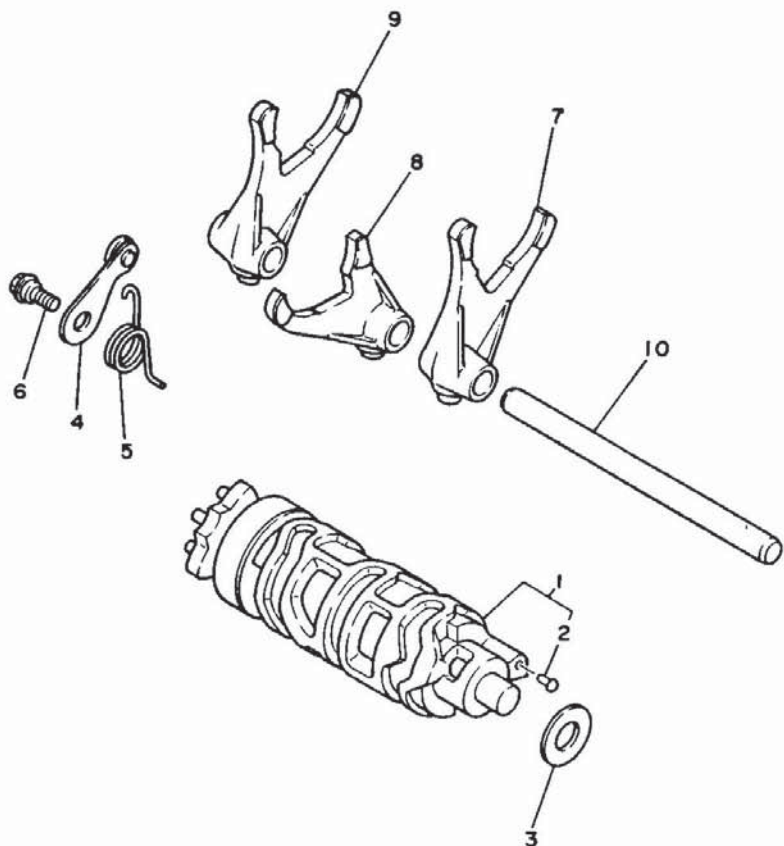
FIG. 14 TRANSMISSION

REF. NO.	PART NO.	DESCRIPTION	Q'TY	REMARKS
29	93210-27666	O-RING	1	
30	93311-92557	BEARING, cylindrical	1	
31	93306-20634	BEARING	1	
32	93102-40333	OIL SEAL	1	
33	90387-306K6	COLLAR	1	
34	47X-17461-51	SPROCKET, drive (15T)	1	
35	90215-26241	WASHER, lock	1	
36	90179-22477	NUT	1	

C15

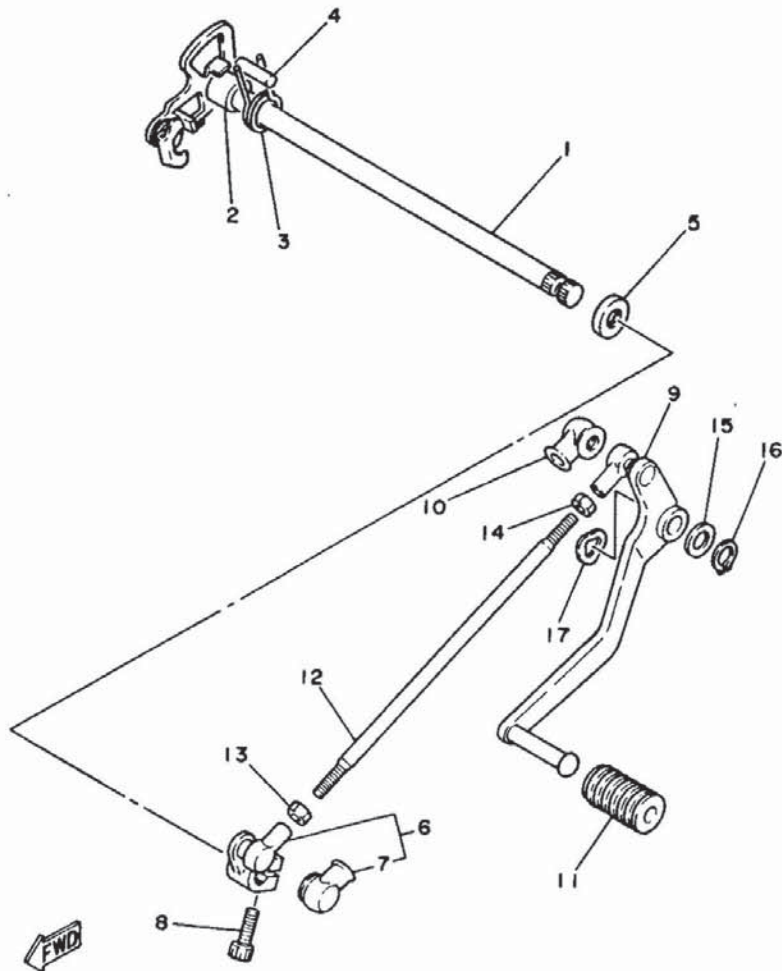
FIG. 15 SHIFT CAM. FORK

REF. NO.	PART NO.	DESCRIPTION	Q'TY	REMARKS
1	47X-18540-00	SHIFT CAM ASSY	1	
2	136-18542-00	.POINT, neutral	1	
3	90201-127E1	WASHER, plate	1	
4	3R4-18140-00	STOPPER LEVER ASSY	1	
5	90508-26674	SPRING, torsion	1	
6	1W1-18177-00	BOLT, stopper	1	
7	47X-18511-00	FORK, shift 1	1	
8	47X-18512-00	FORK, shift 2	1	
9	47X-18513-00	FORK, shift 3	1	
10	47X-18531-00	BAR, shift fork guide 1	1	



47X332-4150

D2



47X332-4160

FIG. 16 SHIFT SHAFT

REF. NO.	PART NO.	DESCRIPTION	Q'TY	REMARKS
1	47X-18101-00	SHIFT SHAFT ASSY	1	
2	90560-12171	SPACER	1	
3	90508-29361	SPRING, torsion	1	
4	93608-25150	PIN, dowel	1	
5	93102-12106	OIL SEAL	1	
6	47X-18112-00	ARM, shift	1	
7	2H9-18154-00	.COVER, dust	1	
8	91311-06020	BOLT	1	
9	47X-18111-00	PEDAL, shift	1	
10	2H9-18154-00	COVER, dust	1	
11	132-18113-01	COVER, shift pedal	1	
12	47X-18115-00	ROD, shift	1	
13	95303-06700	NUT	1	
14	90170-06228	NUT	1	
15	90201-12688	WASHER, plate	1	
16	99009-12400	CIRCLIP	1	
17	90206-12074	WASHER, wave	1	

D3